

# Effects of *Olea oleaster* leaf extract and purified oleuropein on ethanol-induced gastric ulcer in male Wistar rats

Fatiha Abdellah<sup>1</sup>, Tayeb Silarbi<sup>2</sup>, Ferjeni Zouidi<sup>3</sup>, Khaled Hamden<sup>1\*</sup>

<sup>1</sup> Laboratory of Bioresources, Integrative Biology and Exploiting, Higher Institute of Biotechnology of Monastir, University of Monastir, Tunisia

<sup>2</sup> Laboratory of Research on Local Animal Products, Ibn-Khaldoun University, Tiaret, Algeria

<sup>3</sup> Biology Department, Faculty of Sciences and Arts of Muhayil Asir, King Khaled University; Saudi Arabia

## ARTICLE INFO

### Article type:

Original

### Article history:

Received: Nov 9, 2023

Accepted: Jan 6, 2024

### Keywords:

Inflammation  
Nitric oxide  
*Olea oleaster*  
Oleuropein  
Ulcer

## ABSTRACT

**Objective(s):** Evaluating the effect of fresh Oleaster leaf extract (OLE) and purified oleuropein (OLR) on ethanol-induced gastric ulcers in rats. HPLC analysis demonstrates the presence of various polyphenol compounds such as ligstroside, luteolin derivative, oleuropein, and comselogoside.

**Materials and Methods:** Gastric ulcer was induced by administration of ethanol by the gastric gavage route. The olive leaf extract was analyzed by HPLC-PDA-ESI-MS, and OLR was purified. These two compounds were given 2 hr before gastric ulcer induction by ethanol.

**Results:** This study verified that OLE and purified OLR protect from ethanol-induced gastric ulceration and damage, evidenced by the significant decrease in gastric ulcer area (by 74 and 58% respectively) and stomach mucus content (by 169 and 87% respectively). In addition, the ulcer index (UI) and curative index (CI) levels in the stomach of the rats treated with this supplement were also suppressed by 55 and 46%, respectively. OLE and OLR also decreased the gastric myeloperoxidase (MPO) activity and ameliorated the Nitric oxide (NO) content. OLE and OL also ingestion suppressed gastric tumor necrosis factor-alpha (TNF- $\alpha$ ) and interleukin (IL-6) rates. Macroscopic and histological findings revealed that OLE and OLR protect from gastric hemorrhage, severe disruption of the gastric mucosa, and neutrophil infiltration.

**Conclusion:** Overall, the findings demonstrate that OLE and OLR have both promising potential with regard to the inhibition of gastric hemorrhage and lesions.

► Please cite this article as:

Abdellah F, Silarbi T, Zouidi F, Hamden Kh. Effects of *Olea oleaster* leaf extract and purified oleuropein on ethanol-induced gastric ulcer in male Wistar rats. Iran J Basic Med Sci 2024; 27:

## Introduction

Gastric ulcer affects approximately 10% of people, and cause various digestive perturbations (1). Several factors favor the appearance of ulcers and gastric diseases such as alcohol, *Helicobacter pylori*, anti-inflammatory drugs, and caffeine (2). Too much alcohol ingestion caused an increase in inflammatory reactions and excessive production of mediators of inflammatory reactions such as interleukins and cytokines, and consequently gastric damage and permeability, and mucosal damage (3). The activation enzymes linked to gastric inflammation, such as MPO, and pro-inflammatory mediators, such as IL-6 and TNF- $\alpha$ , mediated the gastric mucosa injury (4-6). Additionally, NO was one of the major defensive systems in gastric mucosa defense and protection (7). Currently, commercial drugs have high efficiency for ulcer therapy such as H2-blockers and proton pump inhibitors which provide mucosal defense (8); however, they may cause many toxic effects (9). Therefore, one of the strategies for ulcer prevention and therapy is to search the nontoxic natural compounds. Much research is focused on investigating new natural drugs with greater safety and efficacy (10-14). Natural products, especially medicinal plants, have been an important source of functional substances for the prevention and treatment of various diseases and perturbations (15-19). Among these plants, *Olea europea* (Olive tree) is a natural source of various drugs such as acids, polyphenols, flavonoids, and

fatty acids which are used for the treatment and prevention of many perturbations and pathology.

The Oleaster (Zebouj) is ever-present in Algeria and Tunisia. Oleaster tree leaves have been widely used in the prevention and treatment of various perturbations and diseases due to the richness of their leaves in several active phenolic compounds such as oleuropein (OLR) and hydroxytyrosol and many other polyphenolic drugs (20-24). No previous studies have evaluated the effect of OLE and OLR from *Olea europaea* var. *sylvestris* on ethanol-induced gastric MPO activity and NO, IL-6, and TNF- $\alpha$  level perturbation. Accordingly, the goal of this investigation is to evaluate the effect of OLE and purified OLR on ethanol-induced macroscopic and microscopic damage and ulceration in gastric tissues.

## Materials and Methods

### Plant material

The wild olive tree (*O. europaea* var. *sylvestris*) was harvested from northern Algeria in January 2023 (Bordj-Ménaïel city: Kabylie, Algeria).

### Oleuropein extraction and purification

Fresh oleaster leaves underwent air drying in the shade, followed by grinding with a coffee grinder to produce a dry powder. A total of 300 g of this powder was subjected to extraction with ethanol (1000 ml) under agitation for 24 hr

\*Corresponding author: Khaled Hamden. Laboratory of Bioresources, Integrative Biology and Exploiting, Higher Institute of Biotechnology of Monastir, University of Monastir, Tunisia. Email: Khaled.hamden@yahoo.fr

and subsequently filtered. The resulting ethanol extract was stored at  $-20^{\circ}\text{C}$  until analysis. An aliquot of 4 g from the dry leaf extract underwent chromatography on a silica gel column (480 cm), employing a solvent gradient of hexane, ethyl acetate, and methanol to purify OLR. Silica gel plates were used for TLC analysis (Merck, 60 F-254) to monitor chromatographic behavior, leading to the collection of nine homogeneous fraction groups. The third group was isolated through prep.TLC, eluted with a chloroform: ethanol mixture (8:2, V/V), yielding a single pure chemical with  $R_f=0.6$ . The presence of OLR was confirmed, and its quantity was determined using high-performance liquid chromatography (HPLC) set at 254 nm.

#### HPLC-PDA-ESI(-)/MS analysis

The HPLC-PDA-ESI(-)/MS analysis was conducted using a Surveyor LC system equipped with a diode array detector (Thermo Fisher, San Jose, CA, USA) and a Kinetex EVO C18 column (Phenomenex). The flow rate was set at 1 ml/min, and UV detection was performed at 254, 280, and 360 nm. The gradient program consisted of solvent A (0.01% formic acid) and solvent B (CH<sub>3</sub>CN), with a gradient sequence of 5 min at 10% B, a transition from 10% to 100% B over 42 min, a 5 min hold at 100% B, a return to 10% B in 3 min, and a final 5 min at 10% B. A 4  $\mu\text{l}$  injection volume was utilized. Following flow splitting, the LC system was linked to an LXQ linear ion trap (Thermo Fisher). Operational conditions for (-) ESI mode were optimized, including a sheath gas flow of 50 arbitrary units, an auxiliary gas flow of 8 arbitrary units, a spray voltage of +4.0 kV, an ion transfer tube temperature of  $375^{\circ}\text{C}$ , and a capillary voltage of 35 V. Mass spectral data were recorded through full scanning in the  $m/z$  range of 100–1800. MSn experiments employed a 2 Da isolation width and a normalized collision energy of 35%. Xcalibur software, version 2.0 (Thermo Fisher) was used for data recording and processing. Metabolite identification relied on a comparison of their  $\lambda_{\text{max}}$ , retention times, and MS data with references from previous studies, as detailed in the results and discussions section. The extraction of OLR from Olea oleaster leaves followed a protocol outlined in a prior study and utilized a HPLC Agilent 1260 (Agilent Technologies, CA, USA) (25).

#### Anti-ulcer activity evaluation

##### Animal model

25 Male Wistar rats weighing  $187\pm 11$  g and aged 6 weeks were housed under a controlled environment and permitted water and food pellets *ad libitum*. The rats were divided into four groups, five rats in each group. Control rats received distilled water at a dose of 0.5 ml/100g bw (C). Gastric ulcer rats received absolute ethanol at dose (0.5 ml/100 g bw) by gastric gavage route (26) and named (U). U+OLE, U+OL, and U+OMP: gastric ulcerated rats received 200 mg/kg bw of OLE or OL (27), or 30 mg omeprazole (OMP)(28) as a synthetic proton pump inhibitor drug (29). Ingestion of ethanol was supplemented by gastric gavage route to rats, 2 hr after drug ingestion. Two hours later, the rats were put to sleep for two to five minutes in a small room using a cotton ball soaked in 1.9% diethyl ether, sacrificed by decapitation and the stomach was detached from rats and was opened along the greater curvature. The stomachs were gently rinsed with iced cold phosphate buffer to clean. Cleaned stomachs were photographed and photos were taken to

examine the gastric lesions. Stomach fragments were embedded in paraffin wax and treated in 10% formaldehyde for histological analysis (30). At last, histological slices measuring 5  $\mu\text{m}$  in thickness were cut from the stomachs were captured using an Olympus CX41 light microscope after being stained with hematoxylin and eosin solution (H&E). Parts of the stomachs of the different groups of rats were crushed in phosphate buffer, after centrifugation at 5000 rpm, and the samples were stored at  $-80^{\circ}\text{C}$  until use for biochemical analysis. The area of gastric lesion was measured using the Image J program.

##### Ethical permission

Institutional Animal Ethics Committee (ISBM, UM, Monastir) approval (No. Code: 86/609/EEC dated 03.11.2022) was obtained before the beginning of this rat experimentation.

##### Gastric ulcer index determination and biochemical analysis

The total ulcer area for the cleansed stomach was measured using an inverted microscope with a digital camera. The stomach ulcer area was calculated by the Image J software (version 1.51J8) with digital calculable distance (mm) using an e-ruler. The ulcer index (UI) was determined following the formula: Ulcer index= $[(\text{Ulcer area})/(\text{Total mucosa surface area})]\times 100$ . The curative ratio was determined following the formula: Curative ratio= $(\text{US ulcerated}-\text{US treated})/(\text{US control})$ (31). The gastric MPO activity was determined by the modified method described by Bradley *et al.* (32) by spectrophotometric methods through determination of the absorbance at 460 nm using hydrogen peroxide as substrate. The gastric NO rate was determined by the protocol described previously (33). Gastric TNF- $\alpha$  and IL-6 rates were calculated by enzyme-linked immunosorbent a (Kit-1015901 and kit-67768; Shanghai MLBIO Biotechnology Co., Ltd., Shanghai, China).

##### Statistical analysis

The curves of this study are presented as MEAN $\pm$ SEM. The variations were calculated by one-way analysis of variance (ANOVA) followed by the Fisher test (Stat View).

## Results

### HPLC-PDA-ESI(-)/MS analysis

The composition of phenolics in the ethanolic extract derived from Oleaster leaves was determined through HPLC-PDA-ESI-MS. Metabolite profiling using HRMS was conducted in negative mode (see Figure 1). The identified compounds are listed in Table 1, along with their retention time (Rt) in minutes, monoisotopic mass of the pseudomolecular ion ( $m/z$ ), elemental composition (EC) [M-H]<sup>-</sup>, RDBeq values, and their primary HRMS/MS fragments. A total of 10 phenolic compounds belonging to two chemical classes, secoiridoids and flavonoids, were identified in the Oleaster extract. Secoiridoids constituted the primary compounds found in Oleaster leaves. For instance, Compound 1, eluting at  $R_t=23.61$  min, exhibited a pseudo-molecular ion [M-H]<sup>-</sup> at 715.2448, identified as methoxynuzhenide. Its MS<sub>2</sub> spectrum displayed a fragment ion at  $m/z$  553.1707 (C<sub>26</sub>H<sub>33</sub>O<sub>13</sub>), likely due to the loss of a glucose unit, along with base peaks at  $m/z$  323.0759 (C<sub>15</sub>H<sub>15</sub>O<sub>8</sub>), 285.0397 (C<sub>15</sub>H<sub>9</sub>O<sub>6</sub>), and 299.0546

**Table 1.** HPLC-PDA-ESI(-)/MS analysis of secondary metabolites identified in the ethanolic extract from Oleaster leaves

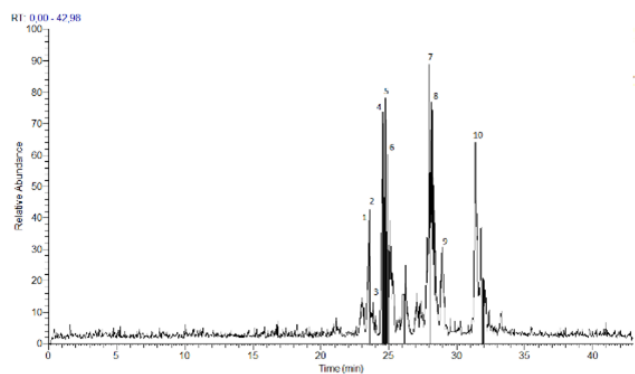
N°	Compounds	Rt (min)	Measured m/z	EC[M-H]	RDBeq values	Main fragments (EC, RDBeq)
1	Methoxynuzhenide	23.61	715.3333	C <sub>33</sub> H <sub>43</sub> O <sub>18</sub>	11.5	553.1707 (C <sub>28</sub> H <sub>33</sub> O <sub>13</sub> , 10.5) 323.0759 (C <sub>13</sub> H <sub>13</sub> O <sub>8</sub> , 8.5) 285.0397 (C <sub>13</sub> H <sub>13</sub> O <sub>8</sub> , 11.5) 299.0546 (C <sub>14</sub> H <sub>11</sub> O <sub>6</sub> , 11.5)
2	Luteolin derivative	23.64	623.2667	C <sub>31</sub> H <sub>27</sub> O <sub>14</sub>	18.5	525.1980 (C <sub>23</sub> H <sub>13</sub> O <sub>2</sub> , 9.5) 513.1982 (C <sub>23</sub> H <sub>13</sub> O <sub>12</sub> , 8.5)
3	Dihydro oleuropein	23.87	543.2000	C <sub>25</sub> H <sub>35</sub> O <sub>13</sub>	8.5	491.1543 (C <sub>23</sub> H <sub>27</sub> O <sub>11</sub> , 11.5)
4	Comselogoside (p-Coumaroyl-6-secoliganoside)	24.72	535.2667	C <sub>23</sub> H <sub>27</sub> O <sub>13</sub>	12.5	539.1756 (C <sub>23</sub> H <sub>31</sub> O <sub>13</sub> , 10.5) 377.1226 (C <sub>19</sub> H <sub>13</sub> O <sub>8</sub> , 9.5) 307.0786 (C <sub>15</sub> H <sub>15</sub> O <sub>7</sub> , 8.5)
5	Oleuropein glucoside or neo-nuzhenide	24.94	701.2293	C <sub>31</sub> H <sub>41</sub> O <sub>18</sub>	11.5	523.1809 (C <sub>23</sub> H <sub>31</sub> O <sub>12</sub> , 10.5) 377.0281 (C <sub>19</sub> H <sub>13</sub> O <sub>8</sub> , 9.5) 307.1074 (C <sub>15</sub> H <sub>15</sub> O <sub>7</sub> , 8.5)
6	Nuzhenide	24.96	685.2336	C <sub>31</sub> H <sub>41</sub> O <sub>17</sub>	11.5	345.0282 (C <sub>19</sub> H <sub>17</sub> O <sub>7</sub> , 10.5) 275.0410 (C <sub>15</sub> H <sub>15</sub> O <sub>5</sub> , 8.5)
7	Oleuropein	28.01	539.1333	C <sub>23</sub> H <sub>31</sub> O <sub>13</sub>	10.5	307.0813 (C <sub>13</sub> H <sub>13</sub> O <sub>7</sub> , 8.5) 377.1228 (C <sub>19</sub> H <sub>13</sub> O <sub>8</sub> , 9.5) 275.0410 (C <sub>15</sub> H <sub>15</sub> O <sub>5</sub> , 8.5)
8	Oleuroside	28.38	539.0637	C <sub>23</sub> H <sub>31</sub> O <sub>13</sub>	10.5	223.0601 (C <sub>11</sub> H <sub>7</sub> O <sub>5</sub> , 5.5) 179.0555 (C <sub>8</sub> H <sub>7</sub> O <sub>4</sub> , 4.5)
9	Oleoside methyl ester	29.02	403.2000	C <sub>17</sub> H <sub>23</sub> O <sub>11</sub>	6.5	361.1288 (C <sub>19</sub> H <sub>17</sub> O <sub>7</sub> , 9.5) 291.0869 (C <sub>13</sub> H <sub>13</sub> O <sub>6</sub> , 5.5) 259.0932 (C <sub>11</sub> H <sub>13</sub> O <sub>4</sub> , 8.5)
10	Ligstroside	31.39	523.1333	C <sub>23</sub> H <sub>31</sub> O <sub>12</sub>	10.5	

(C<sub>16</sub>H<sub>11</sub>O<sub>6</sub>). Compound 3 displayed a precursor ion [M-H]<sup>-</sup> at m/z 543.2000, consistent with the formula C<sub>25</sub>H<sub>35</sub>O<sub>13</sub>. Compound 4, detected at Rt=24.72 min, yielded a deprotonated molecule [M-H]<sup>-</sup> at m/z 535.2667, identified as Comselogoside (p-Coumaroyl-6-secoliganoside) based on HRMS and literature data. Compound 5, eluting at Rt=24.94 min, exhibited a quasi-molecular ion at m/z 701.2293. Compound 6, with a precursor ion [M-H]<sup>-</sup> at m/z 685.2336, was detected at Rt=24.96 min. Compound 7, eluting at Rt=28.01 min, presented a deprotonated ion [M-H]<sup>-</sup> at m/z 539.1333, tentatively assigned as OLR, previously identified in various organs of two *O. europaea* varieties. Its MS2 spectrum displayed main fragment ions at m/z 377.0281 (C<sub>19</sub>H<sub>13</sub>O<sub>8</sub>), 307.1074 (C<sub>15</sub>H<sub>15</sub>O<sub>7</sub>), 345.0282 (C<sub>19</sub>H<sub>17</sub>O<sub>7</sub>), and 275.0410 (C<sub>15</sub>H<sub>15</sub>O<sub>5</sub>). Compound 8, detected at Rt=28.38 min, also exhibited the deprotonated molecule [M-H]<sup>-</sup> at m/z 539.0637, shared similar fragmentation patterns with m/z 377, 307, and 275, similar to OLR. Compound 9, eluting at Rt=29.02 min, was detected with a precursor ion [M-H]<sup>-</sup> at m/z 403.2000. Compound 10, with Rt=31.39 min, possessed a pseudo-molecular ion [M-H]<sup>-</sup> at m/z 523.1333.

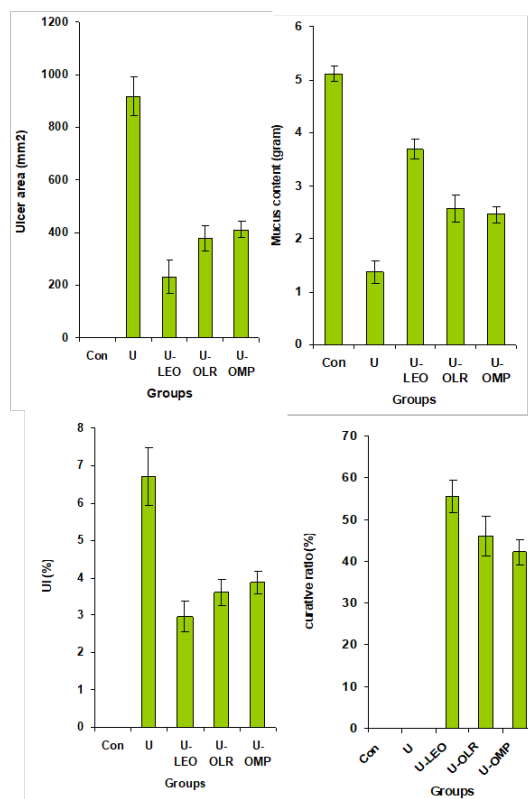
Administration of OLE and OLR exerts a protective action against gastric mucosal injury, which was shown by the presence of normal mucosa evidenced by a significant decrease in gastric ulcer area by 74 and 58% and ulcer index by 55 and 46%, respectively. In addition, OLE and OLR stimulate the gastric mucus content by 169 and 87% and increase the curative index by 55 and 46%, respectively as compared to untreated gastric-ulcer rats (Figure 2).

**Effect of OLE and OLR on ulcer area, gastric mucus rate, ulcer index, and curative index**

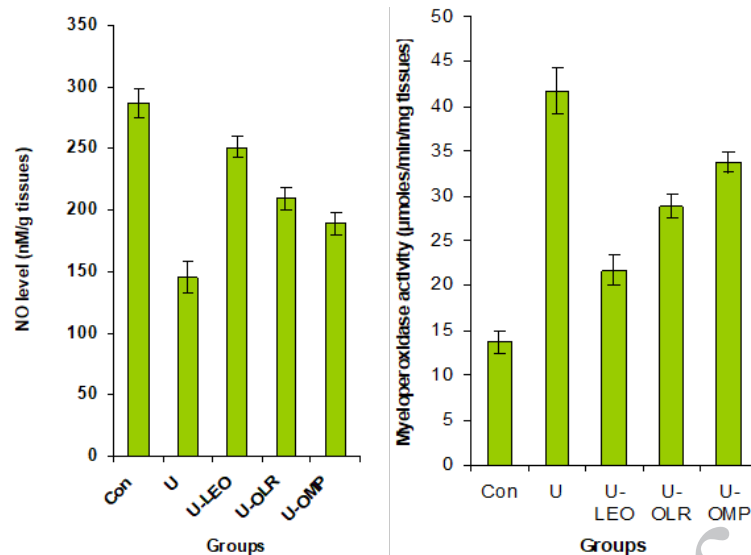
This study showed that OLE and OLR ingestion protects from ethanol-provoked gastric damage and ulceration.



**Figure 1.** HPLC-PDA-ESI(-)/MS Chromatographic profile of ethanolic extract from Oleaster leaves



**Figure 2.** Ulcer area, gastric mucus, UI and CI levels in OLE and OLR-ulcerated rats. Each value represents the mean±SEM for each group (n=5). The statistical analysis is presented as follows: \*P<0.05 vs normal rats; #P<0.05 vs ethanol-induced gastric ulcer in rats. @P<0.05 vs ethanol-induced gastric ulcer in rats treated with OLE; \*P<0.05 vs ethanol-induced gastric ulcer in rats. @P<0.05 vs ethanol-induced gastric ulcer in rats treated with OLR. UI: ulcer index; CI: curative index; OLE: Oleaster leaf extract; OLR: Oleuropein



**Figure 3.** Gastric MPO activity and NO rate in OLE and OLR gastric ulceration treated rats. Each value represents the mean±SEM for each group (n=5). The statistical analysis is presented as follows: \* $P<0.05$  vs normal rats; \* $P<0.05$  vs ethanol-induced gastric ulcer in rats; \* $P<0.05$  vs ethanol-induced gastric ulcer in rats treated with OLE; \* $P<0.05$  vs ethanol-induced gastric ulcer in rats. \* $P<0.05$  vs ethanol-induced gastric ulcer in rats treated with OLR. MPO: myeloperoxidase; NO: Nitric oxide; OLE: Oleaster leaf extract; OLR: Oleuropein; OMP: Omeprazole

#### Effect of OLE and OLR on gastric mucosal MPO activity and NO rate

As shown in Figure 3, gastric ulcer rats had increased MPO activity in the stomach by 204%. Conversely, NO was significantly decreased by 36.9% as compared to the normal group. However, in ulcer-rat treated with OLE and OLR, a significant decrease in gastric MPO activity (by 47 and 30%, respectively) and an increase in NO rate (by 38 and 33%, respectively) was observed.

#### Effect of OLE and OLR on gastric IL6 and TNF- $\alpha$ levels

As shown in Figure 4, ethanol ingestion caused a significant increase in gastric TNF- $\alpha$  and IL-6 by 50% and 200%, respectively as compared with the normal rats. However, the administration of OLE and OLR to gastric-ulcer rats protected from inflammation in gastric tissues and showed a potential decrease of TNF- $\alpha$  (by 21 and

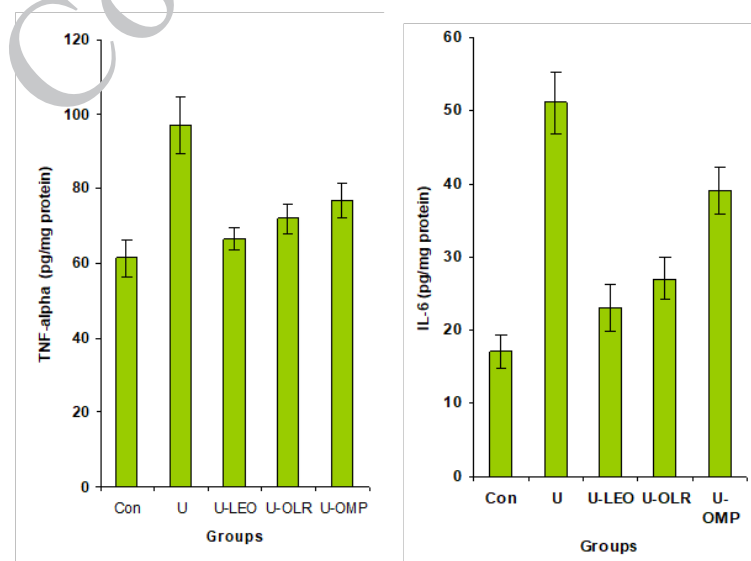
17%, respectively) and IL-6 (54 and 47%, respectively) as compared to untreated gastric-ulcer rat.

#### Effect of OLE and OLR on macroscopic gastric damage

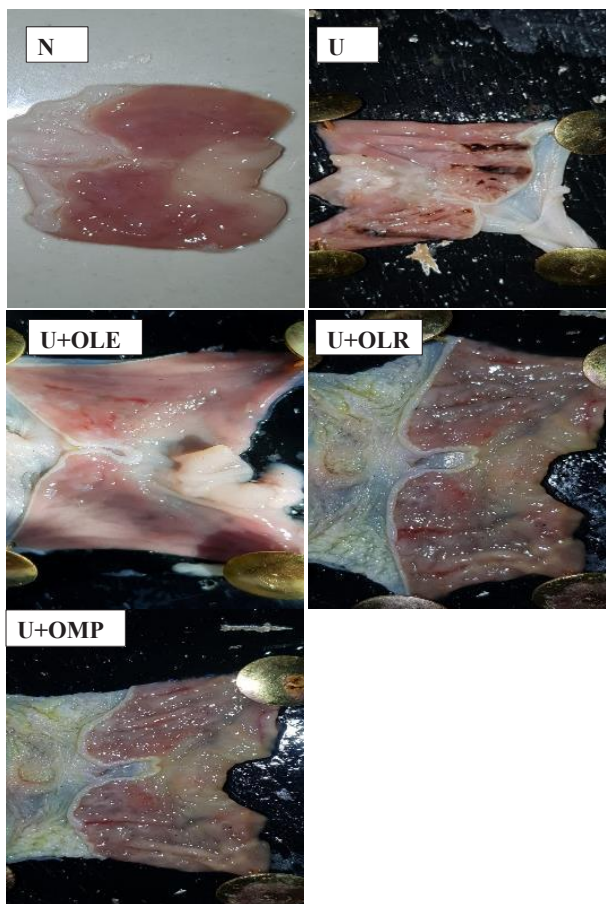
Our results show that the ingestion of ethanol causes severe gastric hemorrhage or even ulceration, this is evidenced by macroscopic observations (Figure 5). On the contrary, pretreatment of rats with omeprazole, OLE, or OLR protects effectively against gastric hemorrhage and ulceration.

#### Effect of OLE and OLR on histological evaluation of gastric damage

In comparison to the gastric mucosa of normal rats, this study demonstrated that supplementing ethanol by the gastric gavage route caused a variety of lesions in the stomach of rats, including severe disruption of the gastric



**Figure 4.** Gastric TNF- $\alpha$  and IL-6 levels in OLE and OLR gastric ulceration treated rats. Each value represents the mean±SEM for each group (n=5). The statistical analysis is presented as follows: \* $P<0.05$  vs normal rats; \* $P<0.05$  vs ethanol-induced gastric ulcer in rats. \* $P<0.05$  vs ethanol-induced gastric ulcer in rats treated with OLE; \* $P<0.05$  vs ethanol-induced gastric ulcer in rats. \* $P<0.05$  vs ethanol-induced gastric ulcer in rats treated with OLR. OLE: Oleaster leaf extract; OLR: Oleuropein

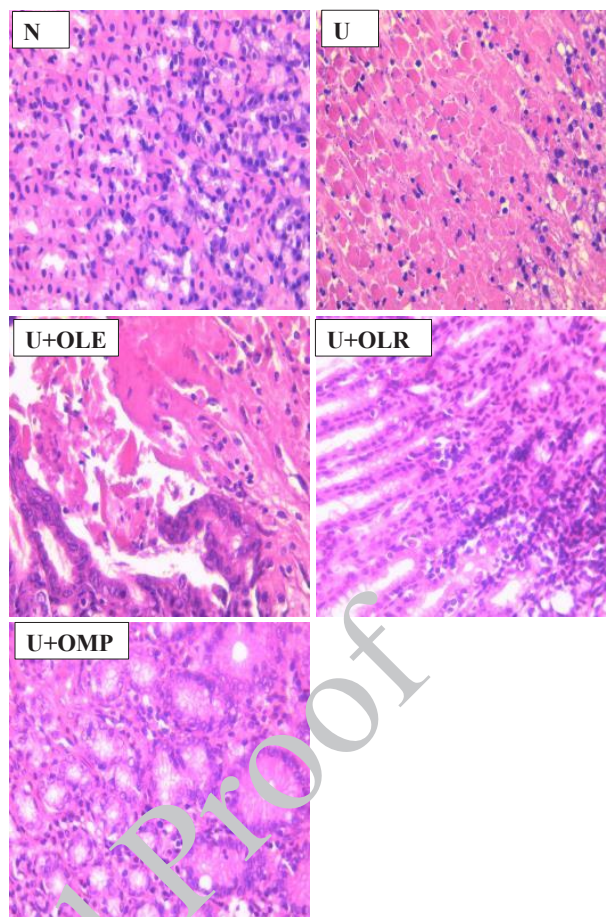


**Figure 5.** Photos from the pathology slides showing the effect of supplementation of OLE and OLR to ethanol-induced gastric ulcer rats. N: appearance normal of gastric tissues without ulcer; U: gastric lesion and ulcerations with hemorrhagic regions. U+OLE, U+OLR, and U+OMP: Gastric ulcerated rats treated with OLE or OLR or at a dose of 200 mg/kg bw (U+OLE and U+OLR), a protective effect from gastric injury and hemorrhagic was observed, and only gastric mucosa are much milder compared to the injuries seen in the ulcer control rats. In Omeprazole ulcer-gastric rats (U+OMP); a partial protective action from gastric lesions and ulcerations with hemorrhagic regions was shown, and this group presented few and middle hemorrhagic regions  
OLE: Oleaster leaf extract; OLR: Oleuropein; OMP: Omeprazole

mucosa, flattening of the gastric mucosa, and necrotic lesions that deeply penetrated the mucosa and sub-mucosal layers (Figure 6). Furthermore, we demonstrated that omeprazole, OLE, or OLR prevented gastrointestinal mucosal ulcers, flattened gastric mucosa, and necrotic lesions in rats' stomachs.

## Discussion

Olea is a plant whose culinary uses have been extensively researched; a significant portion of the global population consumes both oil and fruits daily. Olives are a staple food in the Mediterranean diet. Olive polyphenols have long been safely consumed by humans, as evidenced by the usage of olive fruits and oil in the diet without any known negative consequences. In olive-producing countries, olive leaves have also traditionally been fed to animals and consumed by people for health reasons (34, 35). Olive leaves' phenolic chemicals are thought to be responsible for these qualities. OLR, the most common polyphenol in olive leaves, has antiviral properties, protects the membrane from lipid oxidation, enhances lipid metabolism, bolsters coronary blood vessel dilatation, acts as an antiarrhythmic, protects from inflammation, prevents hypertensive cell death in



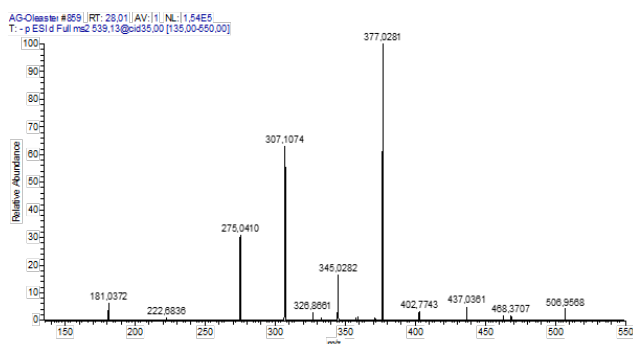
**Figure 6.** Photos from the pathology slides showing the effect of administration of OLE or OLR to gastric mucosa ulcers in rats

There is severe disruption of the gastric mucosa, necrotic lesions penetrating deeply into the mucosa, and neutrophil infiltration in ulcer rats as compared to the gastric mucosa of normal rats (H&E stain, 400X). U+800 mg BRE from pulp and U+800 mg OLE from peel: stomach histological section of rat treated with pulp BRE at dose of 800 mg/kg bw: the gastric wall appears normally, but there are a few small lesions in gastric mucosa. Stomach histological section of the rat treated with Omeprazole at dose of 30 mg/kg bw: mild disruption to the submucosal layer  
OLE: Oleaster leaf extract; OLR: Oleuropein; OMP: Omeprazole

cancer patients, and has therapeutic and preventative effects against several other disorders (36). This study showed that OLE contents of 10 phenolic compounds were identified in the Oleaster extract belonging to two chemical classes: secoiridoids and flavonoids. Secoiridoids were the main compounds found in Oleaster leaves. Among them, OLR (Rt 28.01 min) was the major phenolic component in leaf ethanolic extract. It was already described as the most representative secondary metabolite of cultivated olive leaves (37, 38). Compound 1, with retention time  $Rt=23.61$  min, has a pseudo-molecular ion  $[M-H]^-$  at 715.2448. This compound was assigned as methoxynuzhenide. Its MS2 spectrum shows the fragment ion at  $m/z$  553.1707 ( $C_{26}H_{33}O_{13}$ ). It was previously identified in other varieties of *O. europaea* by Baccouri *et al.* (39). Compound 2 with  $Rt=23.64$  min gave a molecular ion  $[M-H]^-$  at  $m/z$  623.2667. Based on literature this compound was identified as a luteolin derivative (40). Its MS2 spectrum contained a base peak at  $m/z$  323.0759 ( $C_{15}H_{15}O_8$ ) followed by 285.0397 ( $C_{15}H_9O_6$ ) and 299.0546 ( $C_{16}H_{11}O_6$ ). Compound 3 presents a precursor ion  $[M-H]^-$  at  $m/z$  543.2000 consistent with the formula  $C_{25}H_{35}O_{13}$ . This compound was assigned as Dihydro oleuropein by comparison to literature data (41, 42). Compound 4 was

detected at a retention time  $R_t=24.72$  min. This compound yielded the deprotonated molecule  $[M-H]^-$  at  $m/z$  535.2667. Based on HRMS and literature data, it was identified as Comselogoside (p-Coumaroyl-6-secologanoside)(43). Its fragment at  $m/z$  491.1543 ( $C_{24}H_{27}O_{11}$ ) resulted from a loss of  $CO_2$ , which is in good concordance with the literature data (44, 45). Compound 5 ( $R_t=24.94$  min) possesses a quasi-molecular ion at  $m/z$  701.2293. It was tentatively identified as Oleuropein glucoside or neo-nuzhenide (46). Compound 6 with a precursor ion  $[M-H]^-$  at  $m/z$  685.2336 was detected at a retention time of 24.96 min. It was identified as nuzhenide (47). Compound 7 detected at  $R_t=28.01$  presented a deprotonated ion  $[M-H]^-$  at  $m/z$  539.1333. This compound tentatively assigned as OLR was previously identified in different organs of two varieties of *O. europaea* (Koroneiki and Chetoui) by Toumi *et al.*, (48). Its MS2 spectrum (Figure 7) shows the main fragments ions at  $m/z$  377.0281 ( $C_{19}H_{21}O_8$ ), 307.1074 ( $C_{15}H_{15}O_7$ ), 345.0282 ( $C_{18}H_{17}O_7$ ) and 275.0410 ( $C_{15}H_{15}O_5$ ). Compound 8 was detected at a retention time of 28.38 min and presented the same deprotonated molecule  $[M-H]^-$  at  $m/z$  539.0637 of compound 7 (OLR). As described in literature (49, 50), this compound was identified as Oleuroside which differs from OLR in the position of a double bond in the elenolic acid moiety. It shares a similar fragmentation pattern with  $m/z$  377, 307, and 275 to be the main product ions. Compound 9 with a retention time at  $R_t=29.02$  min was detected with a precursor ion  $[M-H]^-$  at  $m/z$  403. 2000. It was confirmed by comparison to authentic standards and consequently could correspond to Oleoside methyl ester. Its MS2 fragmentation indicated the presence of two ions at  $m/z$  223.0601 ( $C_{11}H_{11}O_5$ ) and 179.0555 ( $C_6H_{11}O_6$ ). Compound 10 with retention time  $R_t=31.39$  min possesses a pseudo-molecular ion  $[M-H]^-$  at  $m/z$  523.1333. In a previous report, researchers (51), were able to identify this compound as ligstroside. Its MS2 fragmentation indicated the existence of a base peak at  $m/z$  361 ( $C_{19}H_{21}O_7$ ) followed by 291 ( $C_{15}H_{15}O_6$ ) and 259 ( $C_{15}H_{15}O_4$ ).

One of the strategies for the prevention and treatment of gastric ulcers is the inhibition of inflammation and leukocyte infiltration in gastric mucus and the suppression of inflammatory mediators in gastric tissues (52, 53). In this study, ingestion of ethanol caused inflammation in gastric mucosa, evidenced by a significant increase in the MPO activity and a decrease in NO rate. In addition, the presence of inflammation in the gastric mucus is confirmed by an elevated level of TNF- $\alpha$  and IL6. The gastric inflammation induced by ethanol caused damage and death of the gastric mucosa cells and consequently an important decrease



**Figure 7.** ESI(-)/MS2 spectrum of Oleuropein ( $m/z$  539.1333).

in the gastric mucus by 73% as compared to normal rats. The damage to gastric mucus cells is also observed by visual morphological changes such as gastric lesions and ulcerations with hemorrhagic regions (Figure 5) and histological alteration as severe. There is severe disruption of the gastric mucosa and necrotic lesions penetrating deeply into mucosa and neutrophils infiltration in ulcer rats as compared to the gastric mucosa of normal rats (Figure 6), and subsequently a significant increase in UA and UI by 73 and about 70%, respectively as compared to normal rats.

In ulcerated rats treated with OLE and OLR, an effective protective effect from gastric damage and ulceration has been observed. Pretreatment of ulcerated rats by OLE or OLR protected from gastric mucosa and necrotic lesions penetrating deeply into mucosa and neutrophils infiltration in ulcer rats as compared to the gastric mucosa of normal rats (Figure 6). In addition, ingestion of OLE or OLR by ulcerated rats protects and prevents severe disruptions of the gastric wall and gastric lesions and ulcerations with hemorrhagic regions in rats with ethanol-induced gastric ulcers (Figure 5). In addition, the supplementation of OLE or OLR to ethanol-induced gastric ulcer rats inhibits inflammation at the level of gastric tissues, observed by an important inhibition of MPO activity and TNF $\alpha$  and IL6 rates and improvement of NO rate. Researchers (54) demonstrated that pre-treatment with *Olea europaea* L. cv. *Arbequina* extract before indomethacin administration potentially protects from microscopic and macroscopic gastric mucosal lesions and alteration. A study (55) revealed that the ingestion of raw olive leaf extract by ethanol-induced gastric ulcer rats prevents gastric hemorrhagic lesions, decreases ulcers, and reduces the inflammatory mediator's levels. Prior studies show that olive leaf extract protects from various human diseases and functions in certain diseases (56). Rezagholizadeh *et al.* (57) have indicated that OLR possesses the ability to inhibit several inflammatory enzymes, notably lipoxygenases, and reduce the levels of pro-inflammatory cytokines such as IL-6, TNF- $\alpha$ , and IL-1 $\beta$ . OLR has also been shown to scavenge superoxide anions, block radicals produced from hypochlorous acid, and modify the MAPK signaling pathway. Alethari *et al.* (58) showed that ingestion of olive leaf extract protects against inflammation by stopping the increase in TNF- $\alpha$  and IL-6 levels. Mahmoud (59) found that olive leaf extract protects from mucosal injury, damage in surface mucosal cells, and destruction of areas of gastric ulcer in experimental rats (60). Moreover, olive leaves decrease mucosal height and reduce neutrophil infiltration during inflammation. The results of this study suggest that the anti-inflammatory effect of OLE may be due to the inhibition of prostaglandin biosynthesis. These results suggest that OLE contains some bioactive phytochemical compounds that exert an anti-inflammatory activity (61-63). Similarly, a study (64) showed that administration of OLR at a dose of 500 mg/kg daily alleviates gastric damage and ulceration by the decrease of inflammation as tumor TNF- $\alpha$ , prostaglandin E2, endothelial nitric oxide synthase, and caspase-3 levels in indomethacin-induced gastric ulcer rat. Abd-Allah *et al.* (65) also showed that OLR ingestion by acetic acid-induced ulcerative colitis rats causes a significant reduction in stress oxidants, regulates the pro-inflammatory cytokines rates, down-regulates Bax, and up-regulates Bcl2. Moreover, OLR exerts anti-inflammatory, antioxidant, and anti-apoptotic

effects in the ulcerative colitis experimental model (66).

### Conclusion

We conclude that OLE or OLR ingestion significantly protects from ethanol-induced gastric damage and ulceration. These anti-ulcer effects of Oleaster leaf extract and purified OLR are mediated by inhibition of inflammation and induction of NO levels in gastric tissues.

### Acknowledgment

The authors extend their appreciation to the Deanship of Scientific Research at King Khalid University for funding this work through the General Research Project (Grant number RGP.2/83/44). The results presented in this paper were part of the student thesis of Fatiha Abdallah.

### Authors' Contributions

F A and T S conceived and designed the experiments. F Z conceived and designed the experiments and analyzed and interpreted the data. K H performed the experiments, analyzed and interpreted the data, contributed reagents, materials, analysis tools, or data, and wrote the paper.

### Funding statement

This study did not receive any funding in any form.

### Data Availability

The data used to support the findings of this study are available upon request from the corresponding author.

### Conflicts of Interest

The authors declare no competing financial interest.

### References

- Sumbul S, Ahmad MA, Mohd A, Mohd A. Role of phenolic compounds in peptic ulcer: An overview. *J Pharm Biomed Sci* 2011; 3:361-367.
- Zhang W, Lian Y, Li Q, Sun L, Chen R, Lai X, et al. Preventative and therapeutic potential of flavonoids in peptic ulcers. *Molecules* 2020; 25:4626-4656.
- Wang C, Peng D, Liu Y, Wu Y, Gao P, Wei J. Agarwood alcohol extract protects against gastric ulcer by inhibiting oxidation and inflammation. *Evid Based Complement Altern Med* 2021; 2021:9944685-9944695.
- Liu L, Lu K, Xie J, Che H, Li H, Wancui X. Melanin from *Sepia pharaonis* ink alleviates mucosal damage and reduces inflammation to prevent alcohol-induced gastric ulcers. *Food Biosci* 2023; 51:102266.
- Zhou C, Chen J, Liu K, Maharajan K, Zhang Y, Hou L, et al. Isoalantolactone protects against ethanol-induced gastric ulcer via alleviating inflammation through regulation of PI3K-Akt signaling pathway and Th17 cell differentiation. *Biomed Pharmacother* 2023; 160:114315-114325.
- Salem MB, Elzallat M, Mohammed DM, Samir S, Hammam OA, Abdel-Wareth MTA. *Cornu aspersum* mucin attenuates indomethacin-induced gastric ulcers in mice via alleviating oxidative stress and inflammation. *Heliyon* 2023;9:e15677-15691.
- Dejban P, Eslami F, Rahimi N, Takzare N, Jahansouz M, Dehpour AR. Involvement of nitric oxide pathway in the anti-inflammatory effect of modafinil on indomethacin-, stress-, and ethanol-induced gastric mucosal injury in rat. *Eur J Pharmacol* 2020; 887:173579-173589.
- Bagherzadeh K, Safari S, Amanlou M, Motevalian M. Proton pump inhibitors in Iranian population: from clinical regimens to pharmacogenomics. *Physiol Pharmacol* 2020; 24:230-249.
- Jafari M, Boskabady MH, Rezaee SA, Rezaeian S, Behrouz S, Ramezannejad R, et al. Lentinan and  $\beta$ -glucan extract from shiitake mushroom, *Lentinula edodes*, alleviate acute LPS-induced hematological changes in mice. *Iran J Basic Med Sci* 2023; 26:836-842.
- Hosseini Aria MS, Kakhki S, Beheshti F, Ebrahimzadeh MH, Farzadmehr J. Synergic effects of *Trigonella foenum-graecum*, *Ribes rubrum*, *Lavandula angustifolia*, and *Arctium Lappa* extracts mixture on learning and memory deficits in streptozocin-induced diabetic rats. *Iran J Basic Med Sci* 2023; 26:1490-1497.
- Motafeghi F, Gerami M, Mortazavi P, Khayambashi B, Ghassemi-Barghi N, Shokrzadeh M. Green synthesis of silver nanoparticles, graphene, and silver-graphene nanocomposite using *Melissa officinalis* ethanolic extract: Anticancer effect on MCF-7 cell line. *Iran J Basic Med Sci* 2023; 26:57-68.
- Aslam B, Hussain A, Faisal MN, Kousar S, Roobi A, Sajid MR, et al. Polyherbal extract improves glycometabolic control in alloxan-induced diabetic rats via down-regulating the MAPK/JNK pathway, modulating Nrf-2/Keap-1 expression, and stimulating insulin signaling. *Iran J Basic Med Sci* 2024; 27: 170-179.
- Haddad MHF, Mahbodfar H, Zamani Z, Ramazani A. Antimalarial evaluation of selected medicinal plant extracts used in Iranian traditional medicine. *Iran J Basic Med Sci* 2017; 20:415-422.
- Hadipour E, Kafash MR, Emami SA, Asili J, Boghrati Z, Tayarani-Najaran Z. Evaluation of antioxidant and antimelanogenic effects of the essential oil and extract of *Rosax damascena* in B16F10 murine melanoma cell line. *Iran J Basic Med Sci* 2023;26:1076-1082.
- Saad F, Al-shaikh TM, Zouidi F, Taher MA, Saidi SA, Hamden K. Bealain-enriched beetroots exhibit antiulcer and anti-inflammatory potentials. *J Food Process Preserv* 2023; 2023:9522230.
- Marzouk A, Ghasemi, Z, Amin F, Gholamnezhad Z, Boskabady MH. (2024). Effects of *Crocus sativus* and its constituent, safranal, and pioglitazone, on systemic inflammation and oxidative stress induced by PQ aerosol in rats. *Iran J Basic Med Sci* 2024; 27:640-646.
- Saidi SA, Al-Shikh TM, Hamden K. *Ephedra alata* subsp. *alenda* (Ephedraceae) leaf extracts: Phytochemical screening, anti-diabetic, anti-obesity and anti-toxic activities on diabetic-induced liver-kidney-testes toxicities and inhibition of  $\alpha$ -amylase and lipase enzymes. *Heliyon* 2022;8:e11954-11965.
- Tiss M, Souiy Z, Abdeljelil N ben, Njima M, Achour L, Hamden K. Fermented soy milk prepared using kefir grains prevents and ameliorates obesity, type 2 diabetes, hyperlipidemia and Liver-Kidney toxicities in HFFD-rats. *J Funct Foods* 2020; 67:103869.
- Mohamed T, Souiy Z, Achour L, Hamden K. Anti-obesity, anti-hyperglycaemic, anti-antipyretic and analgesic activities of *Globularia alypum* extracts. *Arch Physiol Biochem* 2022;128:1453-1460.
- Bouchoucha S, Boukhebt H, Oulmi A, Mouhamadi Y, Chaker AN. Chemical composition and antimicrobial activity of essential oils of two wild olive subspecies *Olea europaea* L. var. *sylvestris* and the endemic olive *Olea europaea* subsp. *lapperinie* from Algeria. *Nat Prod Res* 2023; 1-8.
- Elgadi S, Ouhammou A, Zine H, Maata N, Ait Babahmad R, El Antari A. Comparative oil composition study of the endemic Moroccan olive (*Olea europaea* subsp. *maroccana*) and wild olive (var. *Sylvestris*) in central west morocco. *J Food Qual* 2021; 2021:1-10.
- Tadić J, Dumičić G, Veršić Bratinčević M, Vitko S, Radić Brkanac S. Physiological and biochemical response of wild olive (*Olea europaea* Subsp. *europaea* var. *sylvestris*) to salinity. *Front Plant Sci* 2021; 12:712005-712016.
- Falek W, Sion S, Montemurro C, Mascio I, Gadaleta S, Fanelli V, et al. Molecular diversity and ecogeographic distribution of Algerian wild olives (*Olea europaea* subsp. *europaea* var. *sylvestris*). *Sci Agric* 2021; 79:e20200308.
- Fanelli V, Mascio I, Falek W, Miazzi MM, Montemurro C. Current status of biodiversity assessment and conservation of wild

- olive (*Olea europaea* L. subsp. *europaea* var. *sylvestris*). *Plants* 2022; 11:480-494.
25. Mahmoudi A, Hadrach F, Bouallagui Z, Feki I, Ghorbel H, Ayadi L, et al. Comparative study of the effect of oleuropein and hydroxytyrosol rich extracts on the reproductive toxicity induced by bisphenol A in male rats: biochemical, histopathological, and molecular analyses. *Environ Sci Pollut Res* 2023;30:78735-78749.
  26. Badr AM, El-Orabi NF, Ali RA. The implication of the crosstalk of Nrf2 with NOXs, and HMGB1 in ethanol-induced gastric ulcer: Potential protective effect is afforded by Raspberry Ketone. *PLoS One* 2019; 14:e0220548.
  27. Mahdavi FS, Mardi P, Mahdavi SS, Kamalinejad M, Hashemi SA, Khodaii Z, et al. Therapeutic and preventive effects of *Olea europaea* extract on indomethacin-induced small intestinal injury model in rats. *Evid Based Complement Altern Med* 2020;2020:6669813-6669822.
  28. Chaithra BN, D'Souza UP, Khandige PS, Sadananda V. Antiulcer activity of ethanolic extract of *Arctocarpus hirsutus* Lam. leaves in albino Wistar rats. *J Appl Pharm Res* 2023; 11:44-51.
  29. Mekonnen AN, Asrade Atnafie S, Wahab Atta MA. Evaluation of antiulcer activity of 80% methanol extract and solvent fractions of the root of *Croton macrostachyus* hocsht: Ex Del. (Euphorbiaceae) in Rodents. *Evid Based Complement Altern Med* 2020; 2020:2809270-2809280.
  30. Abdelkader Saidi S, Al-Shaikh TM, Hamden K. Evaluation of gastroprotective effect of betalain-rich ethanol extract from *Opuntia stricta* var. *Dillenii* Employing an *in vivo* rat model. *J Food Qual* 2023; 2023:1-9.
  31. Ofusori AE, Moodley R, Jonnalagadda SB. Antiulcerogenic effects of *Celosia trigyna* plant extracts on ethanol-induced gastric ulcer in adult Wistar rats. *J Tradit Complement Med* 2020; 10:586-593.
  32. Bradley PP, Priebe DA, Christensen RD, Rothstein G. Measurement of cutaneous inflammation: Estimation of neutrophil content with an enzyme marker. *J Invest Dermatol* 1982; 78:206-209.
  33. Miranda KM, Espey MG, Wink DA. A rapid, sensitive spectrophotometric method for simultaneous detection of nitrate and nitrite. *Nitric oxide* 2001; 5:62-71.
  34. Sánchez-Gutiérrez M, Bascón-Villegas I, Rodríguez A, Pérez-Rodríguez F, Fernández-Prior Á, Rosal A, et al. Valorisation of *Olea europaea* L. olive leaves through the evaluation of their extracts: Antioxidant and antimicrobial activity. *Food* 2021; 12:966-977.
  35. Romero-Márquez JM, Navarro-Horta M, Jiménez-Trigo V, Vera-Ramírez L, Forbes-Hernández TJ, Esteban-Munoz A, et al. An oleuropein rich-olive (*Olea europaea* L.) leaf extract reduces  $\beta$ -amyloid and tau proteotoxicity through regulation of oxidative- and heat shock-stress responses in *Caenorhabditis elegans*. *Food Chem Toxicol* 2022; 162: 112914-112925.
  36. Stevens Y, Winkens B, Jonkers D, Masclee A. The effect of olive leaf extract on cardiovascular health markers: A randomized placebo-controlled clinical trial. *Eur J Nutr* 2021; 60:2111-2120.
  37. Olmo-García L, Kessler N, Neuweger H, Wendt K, Olmo-Peinado JM, Fernández-Gutiérrez A, et al. Unravelling the distribution of secondary metabolites in *Olea europaea* L.: Exhaustive characterization of eight olive-tree derived matrices by complementary platforms (LC-ESI/APCI-MS and GC-APCI-MS). *Molecules* 2018; 23:2419-2434.
  38. Stanković M, Čurčić S, Zlatić N, Bojović B. Ecological variability of the phenolic compounds of *Olea europaea* L. leaves from natural habitats and cultivated conditions. *Biotechnol Biotechnol Equip* 2017; 31:499-504.
  39. Baccouri B, Mechi D, Rajhi I, Vertedor DM. Tunisian wild olive leaves: Phenolic compounds and antioxidant activity as an important step toward their valorization. *Food Anal Methods* 2023; 16:436-444.
  40. Michel T, Khelif I, Kanakis P, Termentzi A, Allouche N, Halabalaki M, et al. UHPLC-DAD-FLD and UHPLC-HRMS/MS based metabolic profiling and characterization of different *Olea europaea* organs of Koroneiki and Chetoui varieties. *Phytochem Lett* 2015; 11:424-439.
  41. Volk J, Sarafeddin A, Unver T, Marx S, Tretzel J, Zotzel J, et al. Two novel methylsterases from *Olea europaea* contribute to the catabolism of oleoside-type secoiridoid esters. *Planta* 2019; 250:2083-2097.
  42. Olmo-García L, Monasterio RP, Sánchez-Arévalo CM, Fernández-Gutiérrez A, Olmo-Peinado JM, Carrasco-Pancorbo A. Characterization of new olive fruit derived products obtained by means of a novel processing method involving stone removal and dehydration with zero waste generation. *J Agric Food Chem* 2019; 67:9295-9306.
  43. Kırıcı D and Ayaz F. *Olea europaea* L. In: Novel drug targets with traditional herbal medicines: Scientific and clinical evidence. Springer 2022; 463-478.
  44. Obied HK, Bedgood Jr DR, Prenzler PD, Robards K. Chemical screening of olive biophenol extracts by hyphenated liquid chromatography. *Anal Chim Acta* 2007; 603:176-189.
  45. Jerman T, Trebše P, Vodopivec BM. Ultrasound-assisted solid liquid extraction (USLE) of olive fruit (*Olea europaea*) phenolic compounds. *Food Chem* 2010; 123:175-182.
  46. Kritikou E, Kalogiouri NP, Kolyvira L, Thomaidis NS. Target and suspect HRMS metabolomics for the determination of functional ingredients in 17 varieties of olive leaves and drupes from Greece. *Molecules* 2020; 25:4889-4912.
  47. Cavaca LAS, López-Encinas JM, Silvero G, Afonso CAM. The olive-tree leaves as a source of high-added value molecules: Oleuropein. *Stud Nat Prod Chem* 2020; 64:131-180.
  48. Toumi K, Świętał Ł, Boguszewska A, Skalicka-Woźniak K, Bouaziz M. Comprehensive metabolite profiling of chemically olive tree root extracts using LC-ESI-QTOF-MS/MS, their cytotoxicity, and antiviral assessment. *Molecules* 2023; 28:4829-4847.
  49. Attabattista R, Losito I, Calvano CD, Cataldi TRI. Exploring the isomeric precursors of olive oil major secoiridoids: An insight into olive leaves and drupes by liquid-chromatography and fourier-transform tandem mass spectrometry. *Foods* 2021; 10:2050-2069.
  50. Čör Andrejč D, Butinar B, Knez Ž, Tomažič K, Knez Marevci M. The effect of drying methods and extraction techniques on oleuropein content in olive leaves. *Plants* 2022; 11:865-881.
  51. Kanakis P, Termentzi A, Michel T, Gikas E, Halabalaki M, Skaltsounis A-L. From olive drupes to olive oil. An HPLC-orbitrap-based qualitative and quantitative exploration of olive key metabolites. *Planta Med* 2013; 79:1576-1587.
  52. Song H, Qiu J, Yu C, Xiong M, Ou C, Ren B, et al. Traditional Chinese medicine prescription Huang-Qi-Jian-Zhong-Tang ameliorates indomethacin-induced duodenal ulcers in rats by affecting NF- $\kappa$ B and STAT signaling pathways. *Biomed Pharmacother* 2022; 156:113866-113876.
  53. Zeng L, Shen L, Fan Y, Luo Q, Hong R, Sun X, et al. Atractylodes processing products protect against gastric ulcers in rats by influencing the NF- $\kappa$ B-MMP-9/TIMP-1 regulatory mechanism and intestinal flora. *Chem Biodivers* 2023; 20:e202300068.
  54. Musa A, Shady NH, Ahmed SR, Alnusaie TS, Sayed AM, Alowaiesh BF, et al. Antiulcer potential of *Olea europaea* L. cv. arbequina leaf extract supported by metabolic profiling and molecular docking. *Antioxidants* 2021; 10:644-660.
  55. Unissa R, Humera B, Alrahef SS, Alrahef SS, Alenezi TKM, Abdallah MH, et al. Anti-ulcer properties, cytokines, and apoptosis regulatory effects of *Olea europaea* leaves from Hail Province, Saudi Arabia. *Not Bot Horti Agrobot Cluj-Napoca* 2022; 50:12891.
  56. AlRashdi AS, Salama SM, Alkiyumi SS, Abdulla MA, Hadi AHA, Abdelwahab SI, et al. Mechanisms of gastroprotective effects of ethanolic leaf extract of *Jasminum sambac* against HCl/ethanol-induced gastric mucosal injury in rats. *Evid Based Complement Altern Med* 2012;2012:786426-786440.
  57. Rezagholizadeh L, Aghamohammadian M, Oloumi M, Banaei S, Mazani M, Ojarudi M. Inhibitory effects of *Ficus carica* and *Olea europaea* on pro-inflammatory cytokines: A review. *Iran J Basic Med Sci* 2022;25:268-275.
  58. Alethari IAM, Mohammed ZI, Hamed NM. Antioxidant benefit of olive leaves extract on arthritis disease induced experimentally in rats. *Iran J Ichthyol* 2021; 8:194-199.



59. Mahmoud MS. Gastroprotective activity of olive leaves extract on 2, 3, 7, 8 Tetrachlorodibenzo-p-dioxin induced gastric fundic mucosal injury in adult male Albino rats (light and electron microscopic study). *Egypt J Histol* 2020; 43:1188-1204.
60. Parisio C, Lucarini E, Micheli L, Toti A, Bellumori M, Cecchi L, et al. Extra virgin olive oil and related by-products (*Olea europaea* L.) as natural sources of phenolic compounds for abdominal pain relief in gastrointestinal disorders in rats. *Food Funct* 2020; 11:10423-10435.
61. Omagari K, Koba C, Nagata A, Ngo LCT, Yamasaki M, Fukuda A, et al. Olive leaf powder prevents nonalcoholic steatohepatitis in Sprague-Dawley rats fed a high-fat and high-cholesterol diet. *Clin Nutr Open Sci* 2021; 37:47-59.
62. Motawea MH, Abd Elmaksoud HA, Elharrif MG, Desoky AAE, Ibrahimi A. Evaluation of anti-inflammatory and antioxidant profile of oleuropein in experimentally induced ulcerative colitis. *Int J Mol Cell Med* 2020; 9:224-233.
63. da Silva ACP, Paiva JP, Diniz RR, dos Anjos VM, Silva ABSM, Pinto AV, et al. Photoprotection assessment of olive (*Olea europaea* L.) leaves extract standardized to oleuropein: *In vitro* and *in silico* approach for improved sunscreens. *J Photochem Photobiol B Biol* 2019; 193:162-171.
64. Koc K, Cerig S, Ucar S, Colak S, Bakir M, Erol HS, et al. Gastroprotective effects of oleuropein and thymol on indomethacin-induced gastric ulcer in Sprague-Dawley rats. *Drug Chem Toxicol* 2020; 43:441-453.
65. Abd-Allah H, Youshia J, Abdel Jaleel GA, Hassan A, El Madani M, Nasr M. Gastroprotective chitosan nanoparticles loaded with oleuropein: An *in vivo* proof of concept. *Pharmaceutics* 2024; 16:153-165.
66. Huguet-Casquero A, Xu Y, Gainza E, Pedraz JL, Belouqui A. Oral delivery of oleuropein-loaded lipid nanocarriers alleviates inflammation and oxidative stress in acute colitis. *Int J Pharm* 2020; 586:119515.

Corrected Proof