

Meta Analysis

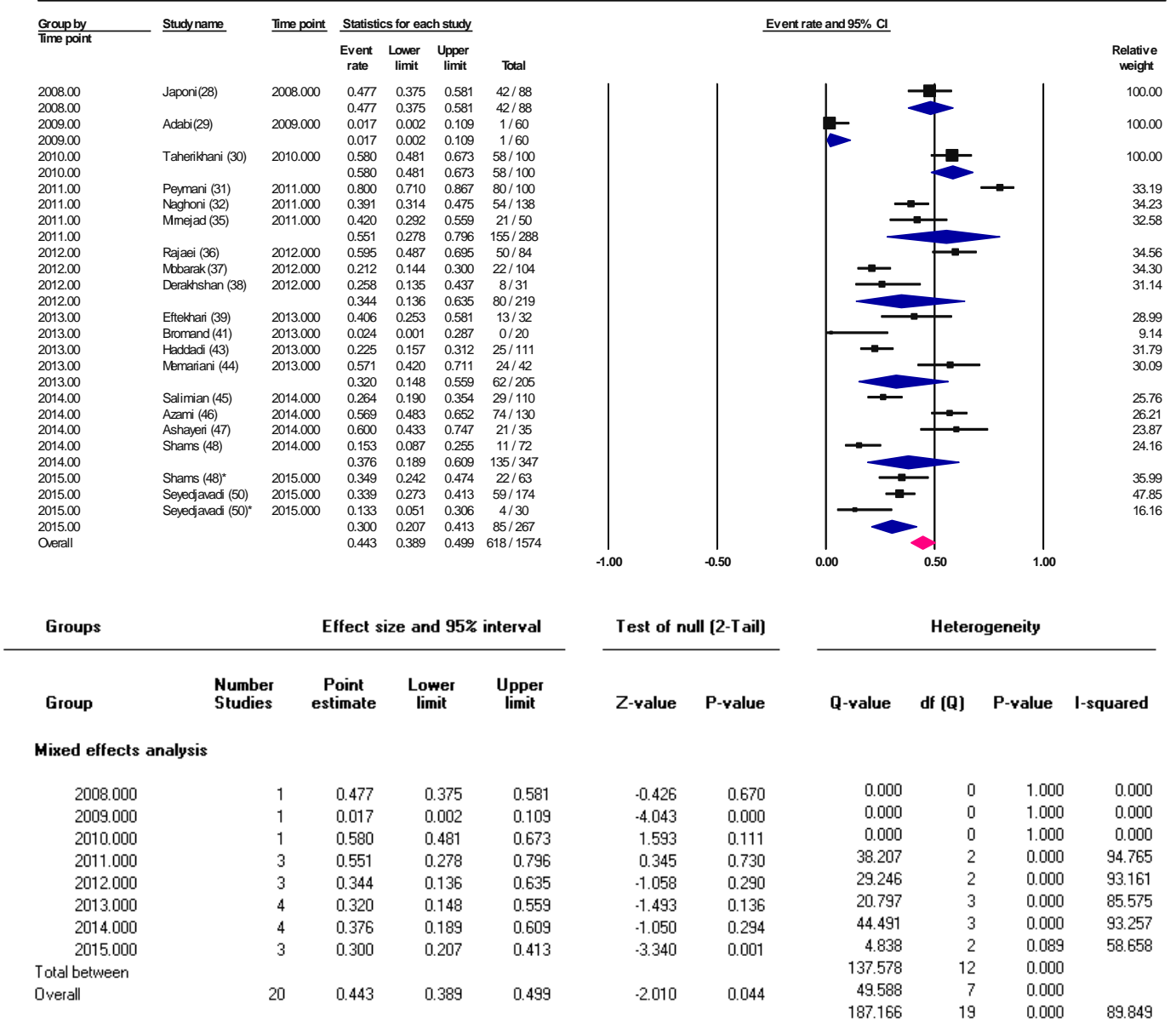
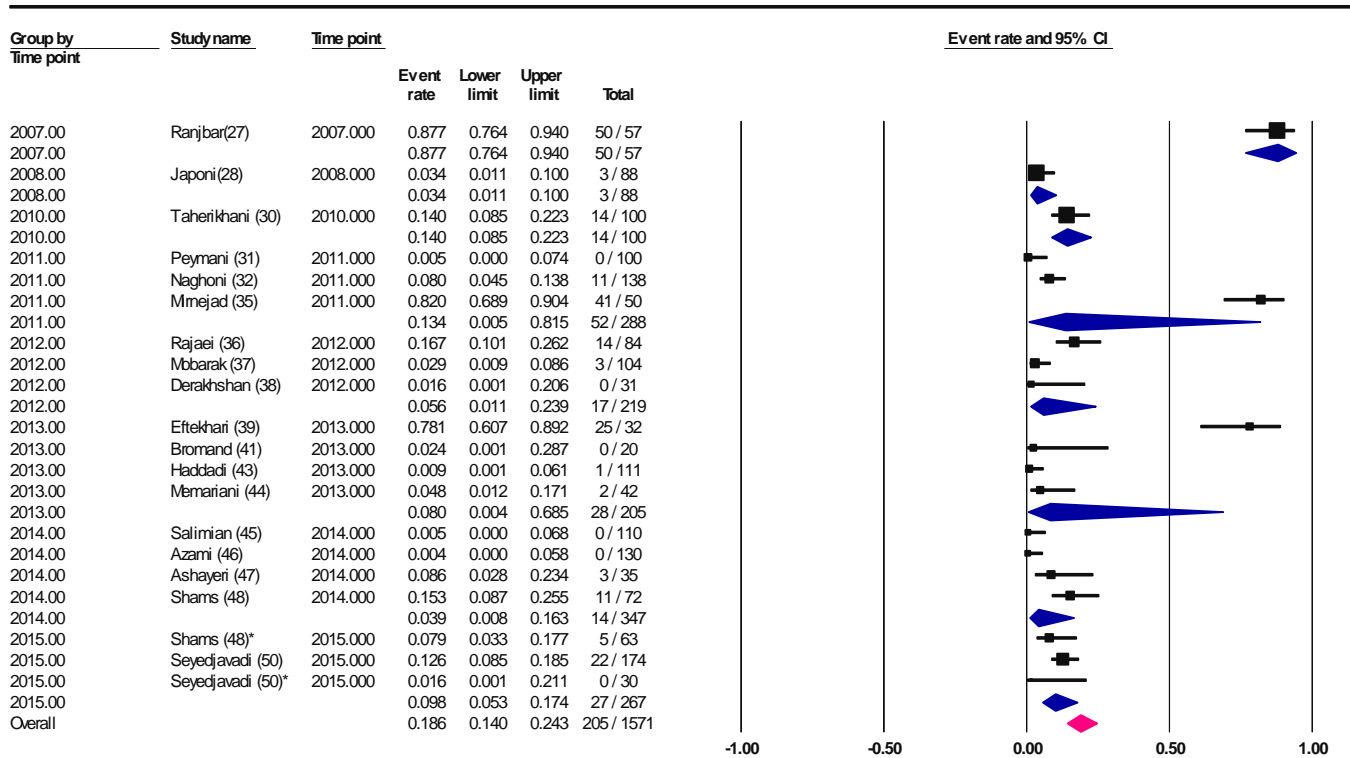


Figure S1. Forest plot of the meta-analysis on prevalence of integron class 1 in gram-negative bacteria with time point subgrouping



Groups	Effect size and 95% interval				Test of null (2-Tail)		Heterogeneity				
	Group	Number Studies	Point estimate	Lower limit	Upper limit	Z-value	P-value	Q-value	df (Q)	P-value	I-squared
Mixed effects analysis											
2007.000	1	0.877	0.764	0.940	4.872	0.000	0.000	0	1.000	0.000	
2008.000	1	0.034	0.011	0.100	-5.692	0.000	0.000	0	1.000	0.000	
2010.000	1	0.140	0.085	0.223	-6.299	0.000	0.000	0	1.000	0.000	
2011.000	3	0.134	0.005	0.815	-1.093	0.275	76.941	2	0.000	97.401	
2012.000	3	0.056	0.011	0.239	-3.328	0.001	10.685	2	0.005	81.282	
2013.000	4	0.080	0.004	0.685	-1.487	0.137	51.510	3	0.000	94.176	
2014.000	4	0.039	0.008	0.163	-4.009	0.000	12.966	3	0.005	76.863	
2015.000	3	0.098	0.053	0.174	-6.576	0.000	3.078	2	0.215	35.026	
Total between							155.180	12	0.000		
Overall	20	0.186	0.140	0.243	-8.540	0.000	116.722	7	0.000		
							271.902	19	0.000	93.012	

Figure S2. Forest plot of the meta-analysis on prevalence of integron class 1 in gram-negative bacteria with time point subgrouping