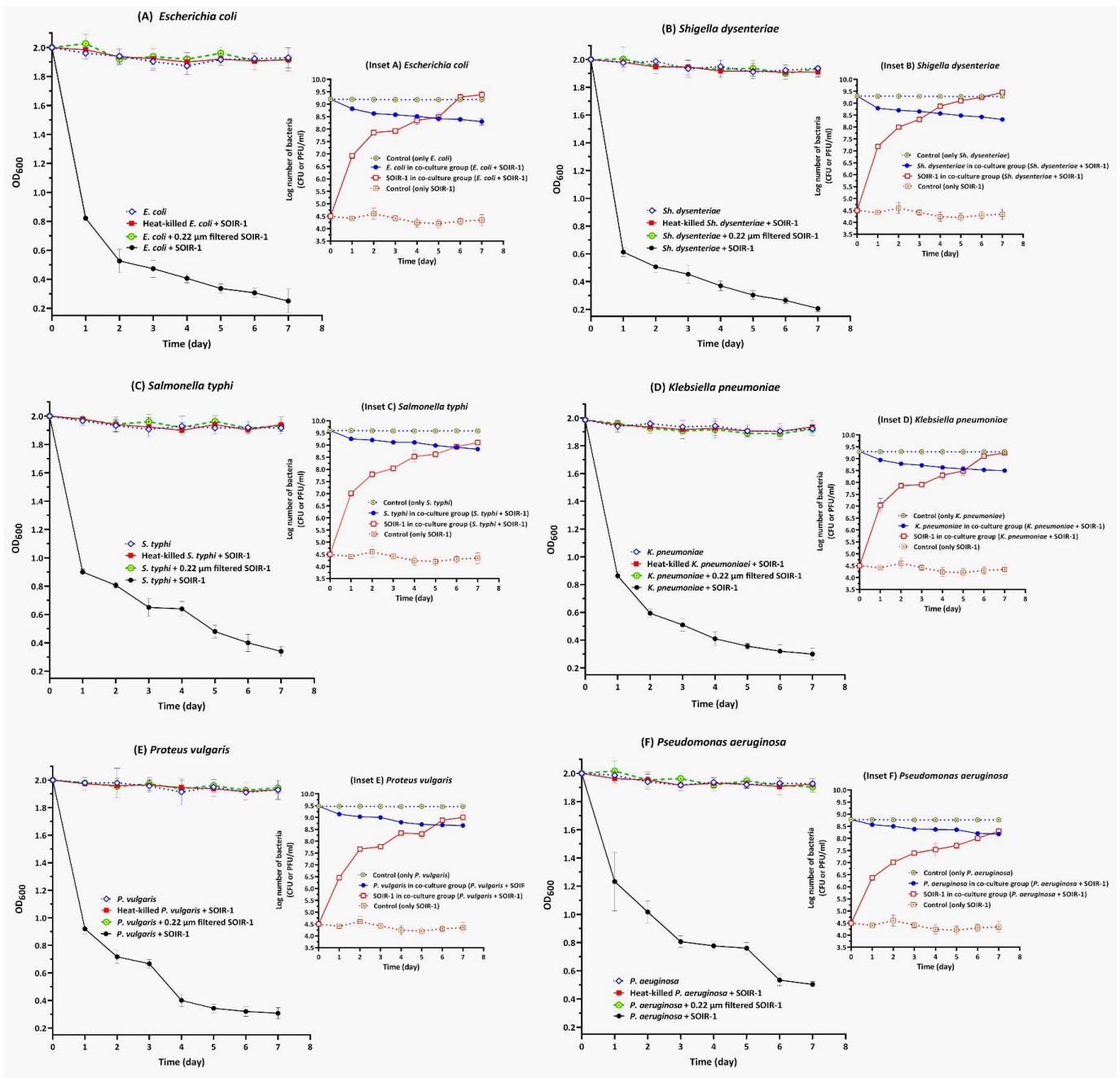
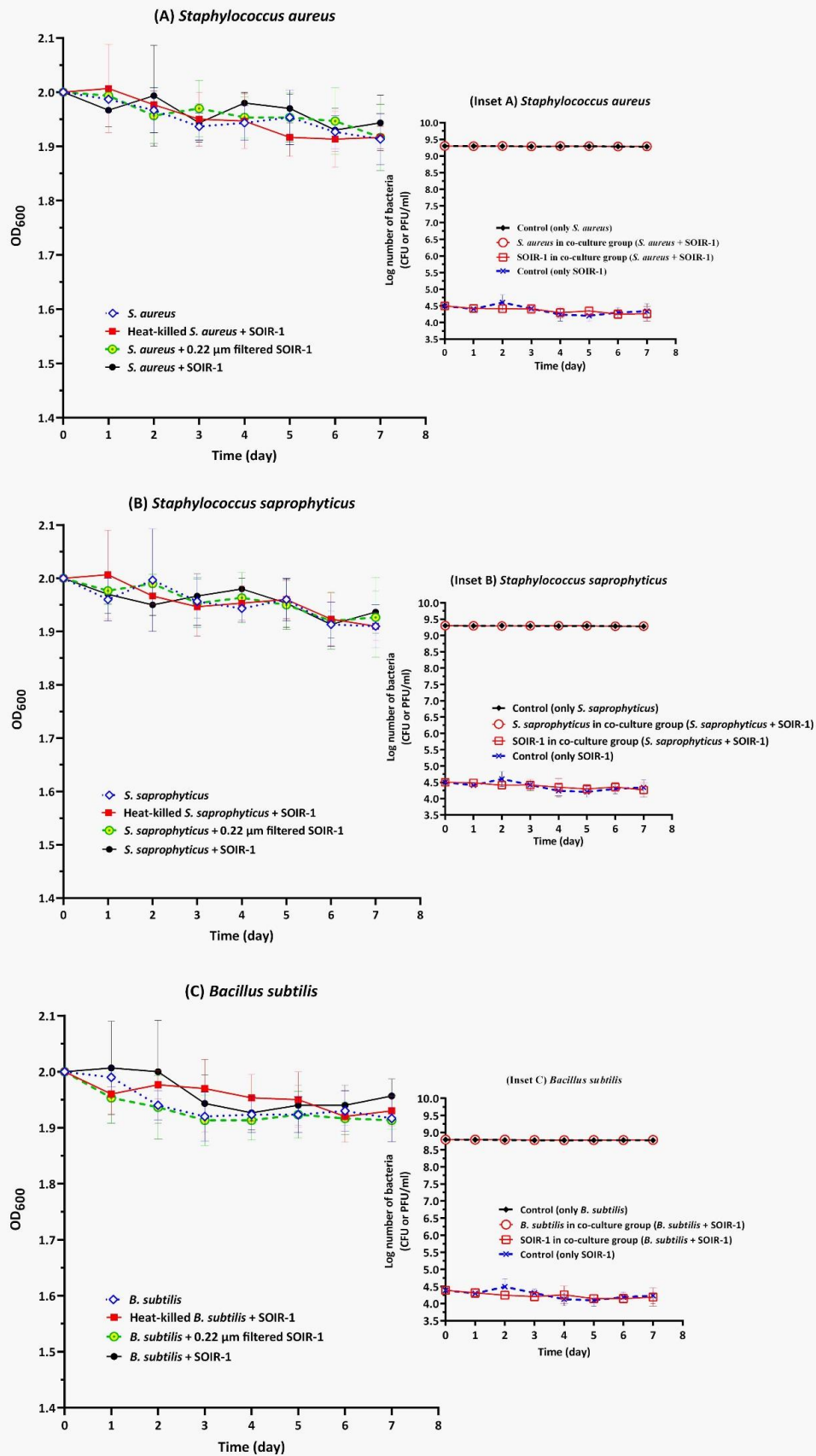


Supplementary Figure 1. The Typical growing lytic plaques developed by *Bdellovibrio bacteriovorus* strain SOIR-1 on a lawn of *E. coli* prey cells.

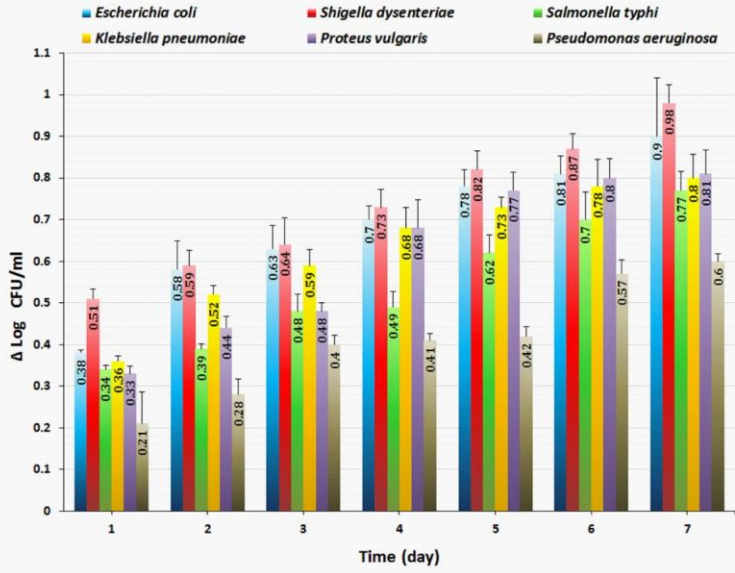


Supplementary Figure 2. The changes in the lysis parameters (OD₆₀₀, CFU/ml, and PFU/ml) of Gram-negative preys in the broth co-cultures with *Bdellovibrio bacteriovorus* SOIR-1.



Supplementary Figure 3. The changes in the lysis parameters (OD_{600} , CFU/ml, and PFU/ml) of Gram-positive bacteria in the broth co-cultures with *Bdellovibrio bacteriovorus* SOIR-1.

(A) Δ Log CFU/ml of susceptible preys in co-cultures with SOIR-1



(B) Δ Log PFU/ml of SOIR-1 in co-cultures with susceptible preys

