

## Supplementary Material- Result

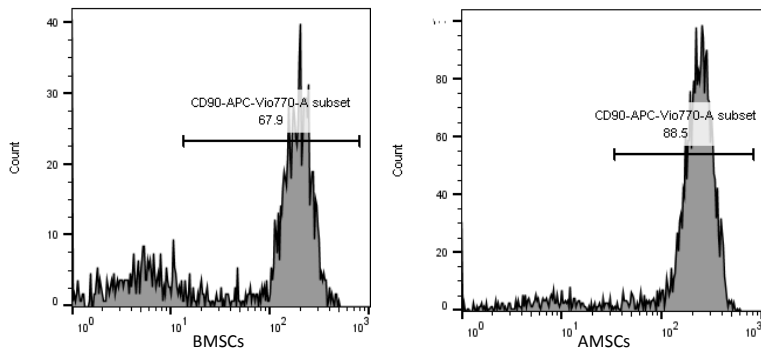


Figure S1: Characterization of mice-derived BMSCs and AMSCs for MSC marker CD90. Flow cytometric analysis indicated that these cells were positive for MSC marker CD90

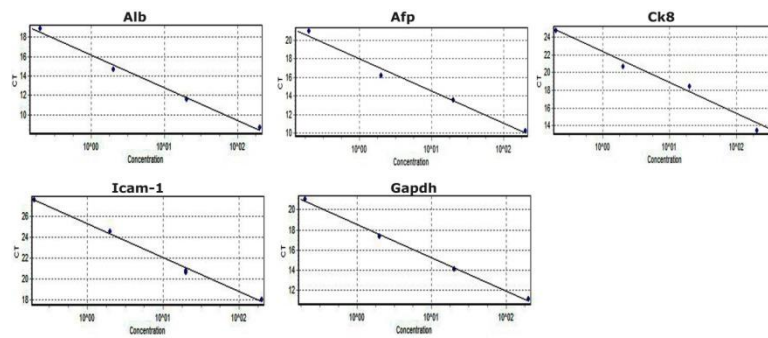


Figure S2: Standard curves for ALb, AFp, Ck8, Icam-1 and Gapdh genes at 10-fold serial dilutions of cDNA.

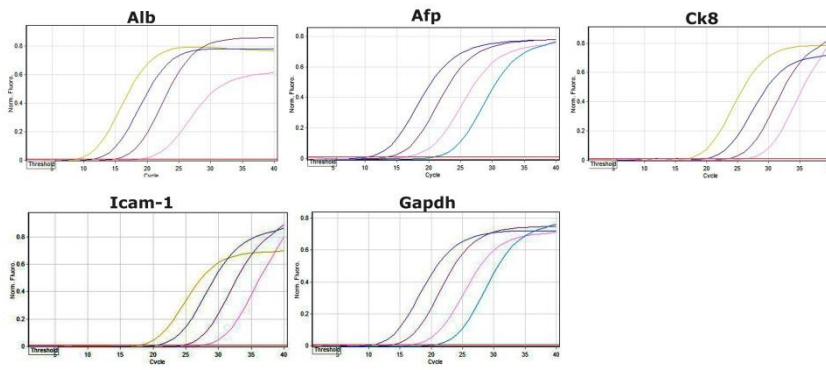


Figure S3: Corresponding amplification curves of the 10-fold serial dilutions of cDNA for both target and reference genes.

Genes	Slope	coefficient ( $R^2$ )	Efficiency (%)
<i>Alb</i>	-3.361	0.9929	98.39
<i>Afp</i>	-3.452	0.9837	94.84
<i>Ck8</i>	-3.311	0.9979	100.45
<i>Icam-1</i>	-3.279	0.9947	101.82
<i>Gapdh</i>	-3.298	0.9979	101

Table S1: Amplification efficiency based on standard graph