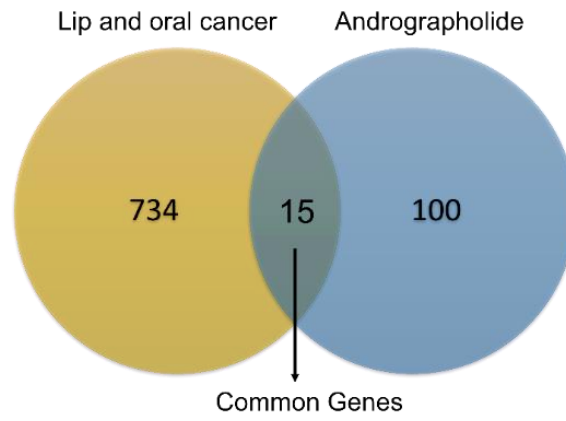
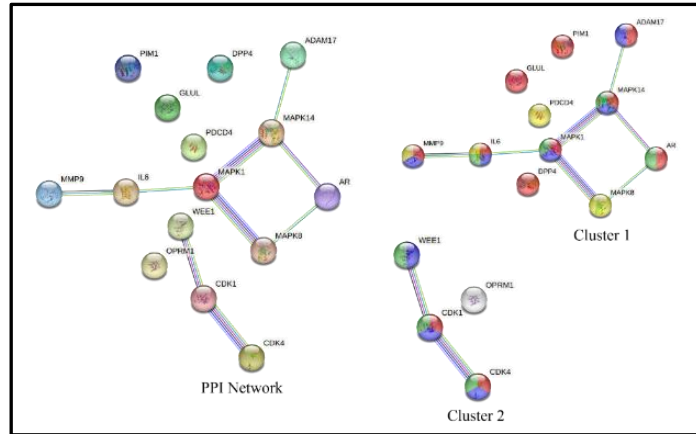


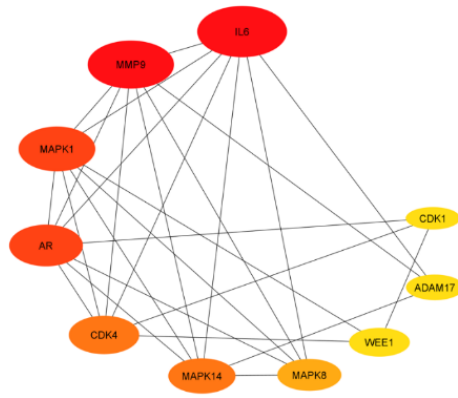
Supplementary Figures [SF]



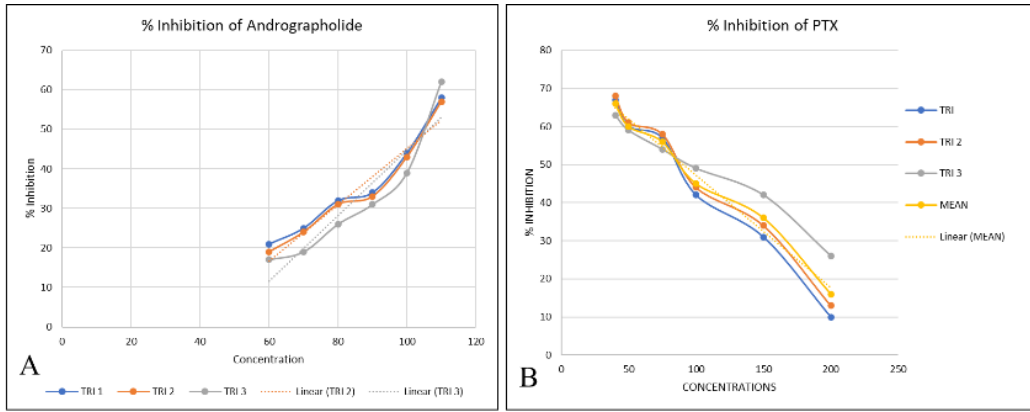
SF 1: Number of genes common between oral cancer and Andrographolide.



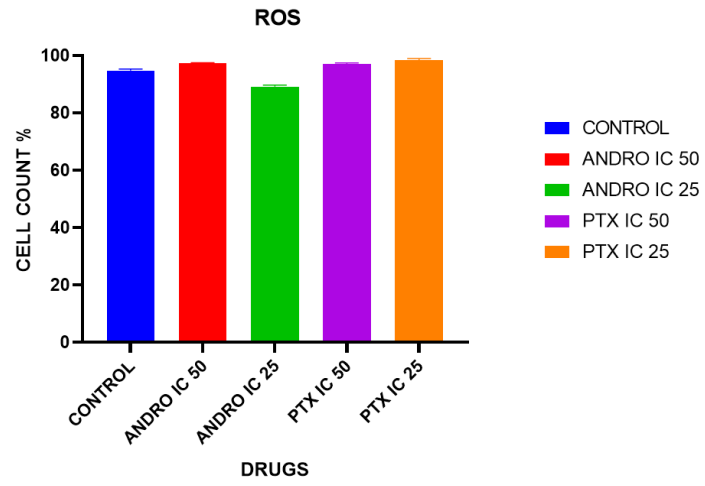
SF 2: Protein-Protein Interaction network of 15 genes: Cluster 1: 11 proteins [nodes] and their association with each other [7 edges], (PPI enrichment p-value: 0.00297). Cluster 2: 4 proteins [nodes] and their association with each other [2 edges], (PPI enrichment p-value: 0.00889)



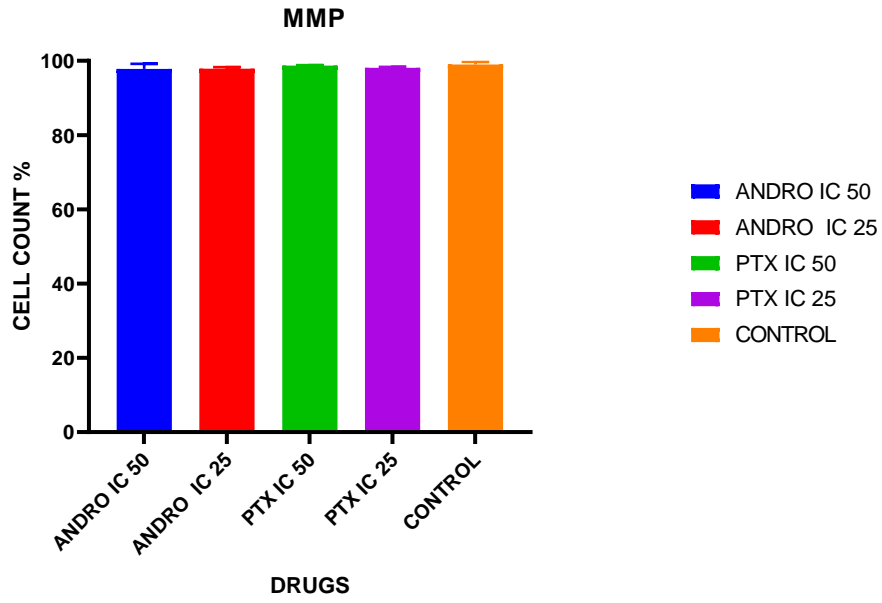
SF 3: Figure showing Top 10 hub genes from common 15 genes.



SF 4: Percent inhibition on KB, after treatment of (A) Andrographolide and (B) PTX in



SF 5: Effect of Andrographolide and PTX on Intracellular ROS production. The data was expressed as Mean \pm Standard Deviation (SD), comparing production of intracellular ROS for the respective concentrations of Andrographolide and PTX.



SF 6: Effect of Andrographolide on Mitochondrial Membrane Potential. The data was expressed as Mean \pm Standard Deviation (SD).