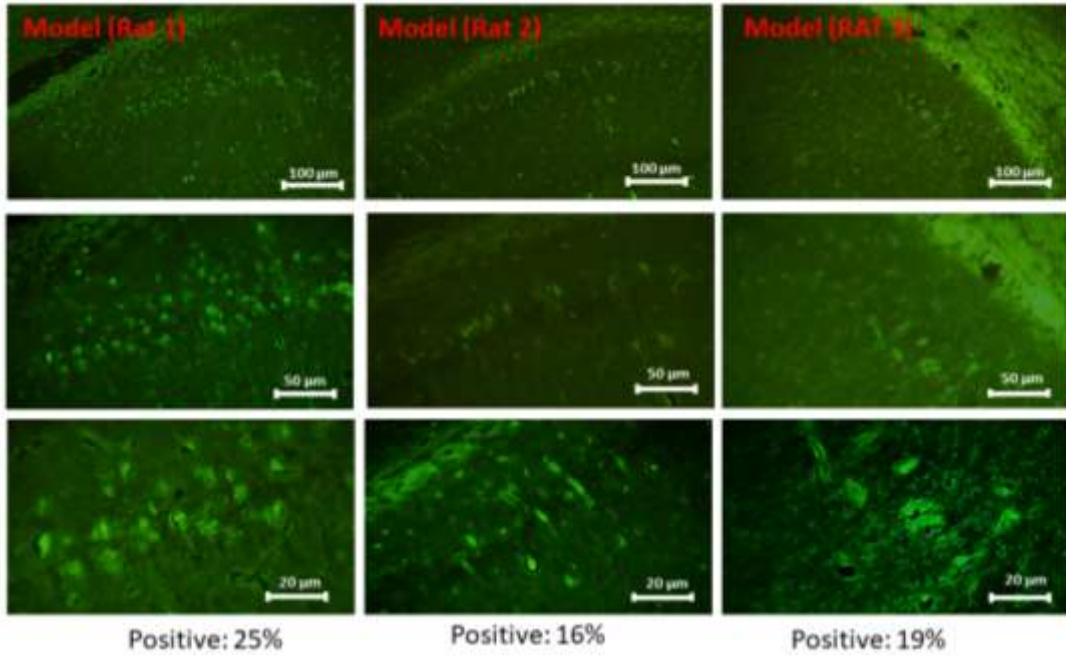


A)



B)

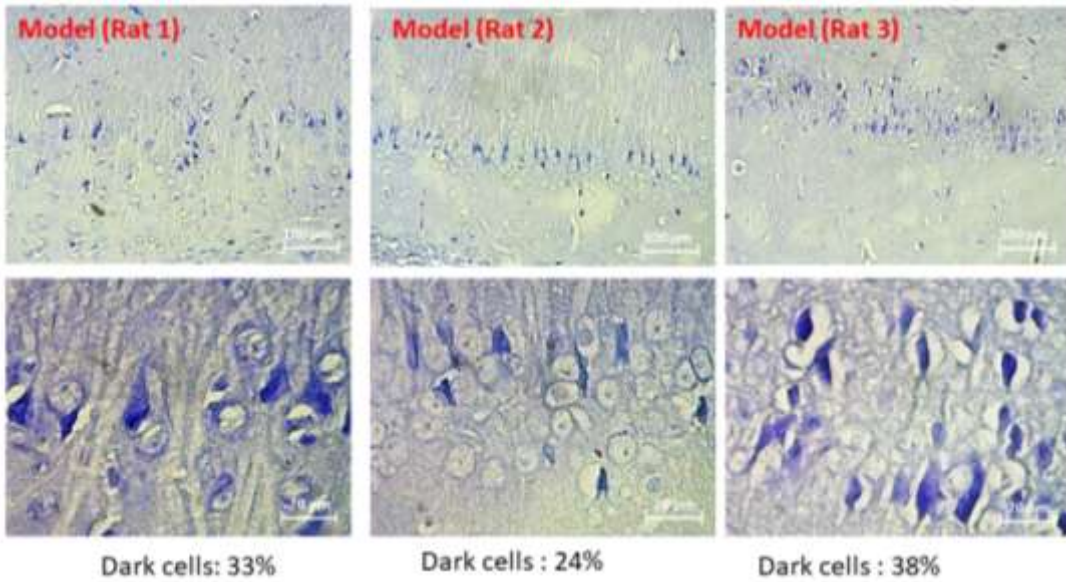


Figure S1. Thioflavin-S and cresyl violet staining in the model group. In order to confirm that Alzheimer's (AD) was induced, three rats were sacrificed ten days after β -amyloid ($A\beta$) injection. A) The percentage of $A\beta$ accumulation in model group (40 \times magnification) (B) the percentage of apoptosis caused by AD (40 \times magnification).