

Quality by design approach for development and characterization of gabapentin-loaded solid lipid nanoparticles for intranasal delivery: *In vitro*, *ex vivo*, and histopathological evaluation

Mahmut Ozan Toksoy ^{1*}, Fırat Aşır ², Mert Can Güzel ³

¹ Department of Pharmaceutical Technology, Dicle University, Diyarbakır, Turkey

² Department of Histology and Embryology, Dicle University, Diyarbakır, Turkey

³ Department of Pharmaceutical Technology, Ege University, İzmir, Turkey

ARTICLE INFO

Article type:

Original

Article history:

Received: Nov 18, 2023

Accepted: Jan 15, 2024

Keywords:

Box-Behnken design

Gabapentin

Histopathology

Nasal delivery

Permeation

Release kinetics

Solid lipid nanoparticle

ABSTRACT

Objective(s): "Quality by Design" (QbD) is a novel approach to product development that involves understanding the product and process, as well as the relationship between critical quality attributes (CQA) and critical process parameters (CPP). This study aimed to optimize the gabapentin-loaded solid lipid nanoparticle formulation (GP-SLN) using a QbD approach and evaluate *in vitro* and *ex vivo* performance.

Materials and Methods: The GP-SLN formulation was created using the microemulsion method by combining Gelucire 48/16, Tween 80, and Plurol Oleique CC 497. The Box-Behnken experimental design was adopted to investigate the effects of independent factors on dependent factors. The GP-SLN formulation was assessed based on particle size and distribution, zeta potential, morphology, entrapment efficiency, release kinetics, permeation parameters, stability, and nasal toxicity.

Results: The nanoparticles had a cubical shape with a particle size of 185.3 ± 45.6 nm, a zeta potential of -24 ± 3.53 mV, and an entrapment efficiency of $82.57 \pm 4.02\%$. The particle size and zeta potential of the GP-SLNs remained consistent for 3 months and followed Weibull kinetics with a significantly higher *ex vivo* permeability (1.7 fold) than a gabapentin solution (GP-SOL). Histopathology studies showed that intranasal administration of the GP-SLN formulation had no harmful effects.

Conclusion: The current study reports the successful development of a GP-SLN formulation using QbD. A sustained release of GP was achieved and its nasal permeability was increased. Solid lipid nanoparticles with optimum particle size and high entrapment efficiency may offer a promising approach for the intranasal delivery of drugs.

► Please cite this article as:

Toksoy MO, Aşır F, Güzel MC. Quality by design approach for development and characterization of gabapentin-loaded solid lipid nanoparticles for intranasal delivery: *In vitro*, *ex vivo*, and histopathological evaluation. Iran J Basic Med Sci 2024; 27: 904-913. doi: <https://dx.doi.org/10.22038/IJBMS.2024.76281.16511>

Introduction

Epilepsy is a neurological disorder characterized by sudden and repetitive electrical discharges such as seizures, convulsions, and involuntary movements. It is estimated that more than 50 million people worldwide suffer from epilepsy (1). Unfortunately, epilepsy patients often face discrimination, misunderstanding, and social stigma. In addition, they experience stress in their daily lives due to seizures (2-5).

Gabapentin (GP), an analog of gamma-aminobutyric acid (GABA), is used in the treatment of epilepsy. GP contains carboxylic acid and primary amine, with pKa values of 3.68 and 10.7, respectively. However, GP is classified as a BCS Class III drug, and absorption problems are often observed. Although the oral bioavailability of a 300 mg dose of GP is 60%, bioavailability gradually decreases as the dose increases (6, 7).

Administering drugs via different methods significantly affects bioavailability, side effects, and targeted delivery. Invasive methods are considered to be more effective because of their rapid response and site-specific delivery, but they require skill and come with safety concerns. On the other hand, it may be necessary to administer drugs orally at

high doses to maintain sufficient concentration due to first-pass metabolism (8). Intranasal delivery is another non-invasive method that is convenient and safe as patients can easily self-administer the drugs, as such intranasal delivery is a practical approach to drug administration (9).

The nasal cavity contains a rich network of vascularity that helps drugs avoid first-pass metabolism. This allows for rapid and more efficient drug absorption. Additionally, delivering drugs nasally can be an effective way to target specific sites in the body (10) and there have been many studies that indicate intranasal drug delivery can also be a useful and effective method to target drugs to the brain. Recent research has shown that nano-drug delivery systems are more effective in transporting drugs from the nose to the brain compared to traditional oral drug solutions (11, 12). In addition, some studies suggest that intranasal drug delivery can result in higher concentrations of drugs in the brain than intravenous drug delivery (13, 14).

Using lipid-based drug delivery systems can be an effective way to enhance the absorption of drugs through the nasal cavity (15, 16). Solid lipid nanoparticles (SLNs) are nano-sized (50–1000 nm), spherical particles with a solid core matrix made up of lipids that are biodegradable

*Corresponding author: Mahmut Ozan Toksoy. Department of Pharmaceutical Technology, Dicle University, Diyarbakır, Turkey. Tel/Fax: +90-4122411000-7546, Email: mozan.toksoy@dicle.edu.tr

and biocompatible and remain solid at room temperature. Hydrophilic or lipophilic drugs can be dissolved or dispersed in the solid lipid core matrix. Due to their unique properties, such as their large surface area, and high drug loading capacity, SLNs are an ideal carrier for improving the therapeutic effects of drugs (17).

The Food and Drug Administration (FDA) has adopted Quality by Design (QbD), which is a new approach to product development. This strategy involves understanding the product and process, as well as the relationship between the critical quality attributes (CQA) and critical process parameters (CPP), to establish a controlled design space. By doing so, a high-quality product can be produced that would reduce the total amount of waste (time, money, and material) generated during the production process (18).

To ensure a high-quality product, QbD assesses both the product and the process. According to the International Conference on Harmonization (ICH Q8), QbD involves every step of pharmaceutical process development, resulting in a comprehensive understanding of both the product and the process (19). Researchers have developed various statistical designs, such as the Box-Behnken design (BBD), Taguchi, D-Optimal, Plackett Burman, and 2-level factorial, using specialized design tools. BBD is a very popular choice for researchers in the development of new formulations, as it requires less time and suggests fewer iterations. Additionally, BBD helps to identify the best formulation to achieve the intended goal by highlighting the impact of independent factors and variables on dependent factors (20).

A study was conducted to investigate the effectiveness of gabapentin loaded into solid lipid nanoparticles (21) in which different formulations were developed and characterized. However, traditional experimental designs have several drawbacks, as changing one factor at a time while keeping others constant results in a large number of experiments, which takes a lot of time and money. Moreover, it is not possible to examine the interactions of factors with each other using this approach. Furthermore, the study did not examine the effects of independent variables on the formulation. Experimental designs, however, provide more accurate results with fewer experiments than the traditional approach when developing formulations (22).

In our research, we employed Gelucire 48/16 as a solid lipid due to its unique properties. Unlike other derivatives, Gelucire 48/16 is made up of polyethylene glycol-32 (PEG-32) stearate and has a high hydrophilic-lipophilic balance (HLB) value that may enhance the solubility of hydrophilic drugs in the carrier system, leading to improved miscibility and dispersibility (23, 24). Tween 80 is a non-ionic surfactant that also has a high HLB value and is commonly used as a surfactant in lipid nanocarrier systems (25, 26). However, the non-ionic properties of Tweens may result in inadequate repulsive forces between particles. Therefore, it should be used together with co-surfactants to stabilize the interfaces of lipid particles. Plurol Oleique CC 497 is one of the most commonly used cosurfactants (27, 28).

This study aimed to create and optimize a formulation of gabapentin-loaded solid lipid nanoparticles (GP-SLN) for nasal administration. The effects of various independent variables on the formulation were examined using BBD. The characteristics of the GP-SLN formulation, particle size, zeta potential, polydispersity index, entrapment efficiency, and stability were investigated. The GP-SLN

formulation and a standard gabapentin solution (GP-SOL) were comprehensively evaluated to determine the release kinetics, permeability, and flux of gabapentin. Additionally, histopathological studies were conducted on sheep nasal mucosa.

Materials and Methods

Materials

Gabapentin was obtained from TCI Chemicals (Japan), Tween 80 was obtained from Merck (Germany), Gelucire 48/16, and Labrasol and Plurol Oleique CC 497 were kindly gifted by Gatte-Fosse (France). Methanol and acetonitrile were purchased from Merck (Germany). Dialysis membrane molecular weight cut-off (mwco: 12000) was obtained from Merck (Germany). All other chemicals used were analytical grade.

Methods

Determination of the gabapentin

Gabapentin was analyzed using a high-performance liquid chromatography system (HPLC, Shimadzu DGU-20A5R+LC 20 AT+SIL 20 AHT+CTO 10 ASVP+SPD M20A, Japan) using a reverse phase C18 column (5 μ m, 250 mm \times 4.6 mm). The mixture of 0.01 M potassium dihydrogen phosphate buffer and acetonitrile (90:10, v/v) was used as the mobile phase (29, 30). The flow rate was 1 ml/min and the injection volume was 20 μ l. The study was carried out at a wavelength of 210 nm. Standard solutions in the simulated nasal fluid (SNF, pH 6.4) were prepared in concentrations of 5-80 μ g/ml (31, 32). The study was carried out at room temperature (25 $^{\circ}$ C).

Preparation of the gabapentin-loaded solid lipid nanoparticles (GP-SLN)

The GP-SLN formulation was created using a modified microemulsion method (33), which can be described briefly as follows: Gelucire 48/16 was heated just above its melting point (60 $^{\circ}$ C). Separately, Plurol Oleique CC 497 and Gabapentin (50 mg) were added to this molten phase to form the oil phase. Tween 80 was added to distilled water and heated to the same temperature as the oil phase in a separate container to form the water phase. Once both phases were at the same temperature (60 $^{\circ}$ C), the oil phase was combined with the water phase to create a microemulsion. This microemulsion was then poured into distilled water at 4 $^{\circ}$ C at a 1:50 ratio. The mixture was stirred for 45 min at 900 rpm to successfully produce the GP-SLNs.

Box-Behnken experimental design

The Box-Behnken design was employed to evaluate the impact of the ingredients on the formulation. Independent (oil, surfactant, and co-surfactant amounts) and dependent (particle size, polydispersity index, and zeta potential) factors were examined using the Design-Expert 12.0.3 software package (Stat-Ease Inc, Minneapolis, MN, USA). In the BBD model, the design specifies the lowest and highest ratios of substances for 17 formulations prepared in mixed order. Five of these formulations are midpoints to determine experimental error and precision.

The percentage of the independent variables is shown in Table 1. The ratios of Gelucire 48/16 (X_1 , 10-20%), Tween 80 (X_2 , 12-20%), and Plurol Oleique CC 497 (X_3 , 3-7%) were determined based on Gasco's patent (34). Dependent

Table 1. Dependent and independent variables used in the experimental design to develop solid lipid nanoparticles

Independent factors	Levels		
	Low (-1)	Medium (0)	High (+1)
X ₁ = Amount of Gelucire 48/16 (%)	10	15	20
X ₂ = Amount of Tween 80 (%)	12	16	20
X ₃ = Amount of Plurol Oleique CC 497 (%)	3	5	7
Dependent factors	Desired		
Y ₁ = Particle size (nm)	Minimum		
Y ₂ = PDI	Minimum		
Y ₃ = Zeta potential (mV)	Maximum		

variables were determined to be at minimal values for particle size (Y₁), polydispersity index (Y₂), and maximum value for zeta potential (Y₃). Factor levels were coded as -1 (low), 0 (medium), and +1 (high) respectively.

The results were suitable for the quadratic model, as expressed by Equation 1.

$$Y = \beta_0 + \beta_1 X_1 + \beta_2 X_2 + \beta_3 X_3 + \beta_4 X_1^2 + \beta_5 X_2^2 + \beta_6 X_3^2 + \beta_7 X_1 X_2 + \beta_8 X_1 X_3 + \beta_9 X_2 X_3$$

Equation 1

According to this, Y was the response, X₁-X₃ were independent variables, β₀ was the intercept, and β₁-β₉ gave the regression coefficients. The design was validated by analysis of variance (ANOVA).

Particle size, polydispersity index, and zeta potential

Particle size (ps), polydispersity index (PDI), and zeta potential (zp) measurements were performed using a Malvern Zeta Sizer (Malvern Nano ZS, UK). Before the evaluation, the samples were diluted with deionized water in a 1:10 ratio.

Morphological studies

The morphological characteristics of the fabricated GP-SLN formulation were examined using a scanning electron microscope (SEM, Dicle University DUBTAM SEM Laboratory). The imaging was performed at 10 kV under low vacuum conditions and with a magnification of 40000-100000. Before the study, the samples were diluted with a 1:1000 ratio in deionized water, dropped onto the grid, and left to dry for 24 hr at room temperature (25 °C).

Solid state characterization studies

The thermal properties of the gabapentin, Gelucire 48/16, and a physical mixture of the gabapentin and Gelucire 48/16 were analyzed using a differential scanning calorimeter (DSC-60, Shimadzu, Japan). The samples were compressed and sealed in aluminum pans before being subjected to thermal analysis. The samples were heated from 20 to 250 °C at a rate of 10 °C/min to determine their thermal behavior (35).

Agilent Cary 630 (Agilent, USA) was used to scan gabapentin, Gelucire 48/16, and a combination of the two for Fourier transform infrared spectroscopy (FTIR) analysis in attenuated total reflectance mode. The samples were placed in voids in modest amounts and scanned at a resolution power of 4 cm⁻¹ in the infrared range between 400 and 4000 cm⁻¹.

Entrapment efficiency

The GP-SLNs were centrifuged at 0 °C at 16000 rpm for 30

min. The supernatant was taken and filtered through a 0.22 μm PVDF syringe filter. The amount of free gabapentin was analyzed by HPLC as mentioned above (n=3, mean±SD). The entrapment efficiency (EE%) was calculated using Equation 2.

$$EE\% = \frac{G_0 - G_1}{G_0} \times 100$$

Equation 2

G₀ is the total amount of gabapentin in the formulation, and G₁ is the amount of free gabapentin.

In vitro release studies

In this study, a dialysis bag (mwco: 12000) was cut to fit Franz diffusion cells and was kept in SNF before use. Donor and receptor chambers were then filled with SNF. The gabapentin solution (GP-SOL) and the GP-SLN formulation (each containing 50 mg of gabapentin) were loaded into the donor cell. Studies were carried out at 37 °C with a continuous stir at 50 rpm. Samples (1 ml) were collected at specified time points (0, 0.25, 0.5, 0.75, 1, 2, 3, 4, 6, and 8 hr) and an equal volume of fresh SNF was added to maintain sink condition (n=3, mean±SD).

Release kinetics study

In vitro release profiles of GP-SOL and the GP-SLN formulation were assessed with the DDSolver software. Several mathematical models (Zero-order, First-order, Higuchi, Korsmeyer-Peppas, Peppas-Sahlin, Baker-Lonsdale, Hopfenberg, and Weibull) were applied to evaluate the GP release kinetics from the SLNs. Based on the *in vitro* release data, the DDSolver program was used to determine the Akaike information criterion (AIC), coefficient of determination (r²), adjusted coefficient of determination (r² adjusted), and the model selection criterion (MSC) for the selection of the "best fit" models (36).

Ex vivo permeation studies

Sheep nasal mucosa, obtained from a slaughterhouse, was cleaned and stored at -80 °C in a freezer until further use. Franz diffusion cells with a permeation area of 1 cm² were used. The mucosa was removed from the freezer and surgically cut to fit the permeation area of the Franz diffusion cells. Receptor chambers were filled with SNF. The GP-SOL and GP-SLN formulations (each with 50 mg of gabapentin) were then loaded into the donor cell. Studies were carried out at 37 °C with continuous stir at 50 rpm. Samples (1 ml) were collected at specified time points (0, 0.25, 0.5, 0.75, 1, 2, 3, 4, 6, and 8 hr) and an equal volume of fresh SNF was added to maintain sink condition. The permeated amount of gabapentin was determined. Flux (J) was calculated as presented in Equation 3.

$$M/S = \frac{D.K.C_d}{h.t}$$

Equation 3

Where S is the surface area of the membrane (cm²) and M represents the amount of gabapentin diffusing through the mucosa (mg). D is the diffusion coefficient of gabapentin (cm²/h). K represents the partition coefficient of gabapentin, C_d is the concentration of gabapentin in the donor cell, h is the thickness of the membrane, and t is the time (hour), (n=3, mean±SD).

Histopathological studies

To conduct a study on nasal histopathology (37),

Table 2. Box-Behnken design: Factors, design, and observed responses to develop solid lipid nanoparticles

Formulations	Independent factors			Dependent factors		
	Gelucire 48/16 (X ₁ %)	Tween 80 (X ₂ %)	Plurol Oleique CC 497 (X ₃ %)	Particle size (nm) (Y ₁)	PDI (Y ₂)	Zeta potential (mV) (Y ₃)
F1	15	16	5	203.8	0.241	-28.9
F2	15	20	7	183.7	0.243	-29.6
F3	15	16	5	242.4	0.235	-28.7
F4	20	20	5	210.4	0.268	-29.0
F5	15	20	3	245.6	0.242	-29.4
F6	15	16	5	210.2	0.238	-29.4
F7	20	16	3	195.7	0.286	-29.9
F8	10	16	7	164.8	0.243	-27.1
F9	20	12	5	256.0	0.268	-24.9
F10	10	16	3	154.8	0.274	-20.8
F11	10	12	5	155.8	0.263	-24.0
F12	15	12	3	230.5	0.232	-23.8
F13	15	16	5	208.2	0.233	-29.4
F14	10	20	5	175.0	0.276	-25.0
F15	20	16	7	203.1	0.245	-23.4
F16	15	16	5	207.3	0.239	-29.6
F17	15	12	7	231.9	0.233	-22.2

freshly removed sheep nasal mucosa was obtained from a slaughterhouse. Three nasal mucosa sections of uniform thickness measuring 0.2 mm were selected. The first piece of mucosa was treated with isopropyl alcohol to serve as a positive control, the second piece was treated with phosphate buffer saline (PBS) at pH 6.4 as a negative control, and the third piece was treated with the GP-SLN formulation for one hour. After cleaning with PBS for an hour, the mucosa was immersed in a 10% v/v formalin solution overnight. Each of the three mucosa pieces was placed in a paraffin block before being divided into 5 µm slices using a microtome. To assess any mucosal damage, sections were stained with hematoxylin-eosin and examined under a Zeiss Imager A2 light microscope (Leica, Germany).

Stability

After being stored at room temperature (25 °C) for three months, the GP-SLN formulation was analyzed for particle size, polydispersity index, and zeta potential (n=3, mean±SD).

Statistical analysis

The experiments were conducted three times to ensure accuracy (n=3) and the results were used to determine the mean and standard deviation (mean±SD). The GP-SLN formulation was evaluated using the Stat-Ease design of experiment software, and a one-way ANOVA test was applied to confirm the significance with $P < 0.05$.

Results

Box-Behnken design: Preparation and optimization of SLNs

The Box-Behnken design (BBD) was used to investigate the effects of each factor on the formulations. A three-factor, three-level BBD was performed on various independent factor level combinations, resulting in the 17 formulations shown in Table 2.

Regression from the BBD for each predicted dependent factor is presented in Equations 4-6.

$$Ps(\text{nm}) = 214.38 + 26.85X_1 - 7.44X_2 - 5.39X_3 - 29.2X_1^2 - 16.2X_1X_2 - 0.65X_1X_3 + 14.12X_2^2 - 15.83X_2X_3 - 5.58X_3^2$$

Equation 4

$$PDI = 0.237 + 0.014X_1 + 0.004X_2 - 0.008X_3 + 0.028X_1^2 - 0.003X_1X_2 - 0.003X_1X_3 - 0.004X_2^2 + 0.003X_3^2$$

Equation 5

$$Zp(\text{mV}) = -29.2 - 1.29X_1 - 2.26X_2 + 0.2X_3 + 2.21X_1^2 - 0.775X_1X_2 + 3.2X_1X_3 + 1.26X_2^2 - 0.45X_2X_3 + 1.69X_3^2$$

Equation 6

According to the ANOVA analysis results shown in Table 3, F values greater than 0.05 indicate that the model was significant (38). The Model F values were 4.65, 4.31, and 12.88 for particle size, PDI, and zeta potential respectively. There was only a 2.76% chance for particle size, a 3.36% chance for PDI, and a 0.14% chance for zeta potential that the F value could occur due to noise.

The data were imported into the Design Expert software and 3D surface-response graphs were generated, as shown in Figure 1. The impact of independent variables, Gelucire 48/16, Tween 80, and Plurol Oleique on the formulation characteristics, particle size, PDI, and zeta potential were evaluated. Statistical results were consistent with the 3D surface-response graphs.

After conducting the BBD experiments, the desirability point was determined. Based on this, the PDI, zeta potential, and particle size of formulations containing Gelucire 48/16 (15%), Tween 80 (16%), and Plurol Oleique CC 497 (5%) were predicted as 0.237, -29.2 mV, and 214.38 nm, respectively.

Characterization studies of the GP-SLNs

Particle size, polydispersity index, zeta potential, and entrapment efficiency

The particle size, PDI, and zeta potential of the optimized GP-SLN formulation were found to be 185.3±45.6 nm,

Table 3. Box-Behnken design: Regression coefficients and P-values for dependent factors to develop solid lipid nanoparticles

Coefficients	Responses		
	Particle size (nm)	PDI	Zeta potential (mV)
Standard deviation	17.59	0.011	1.11
Mean	204.66	0.251	-26.77
R-Squared	0.857	0.847	0.943
Model F-value	4.65	4.31	12.88
Model P-value	0.0276	0.0336	0.0014

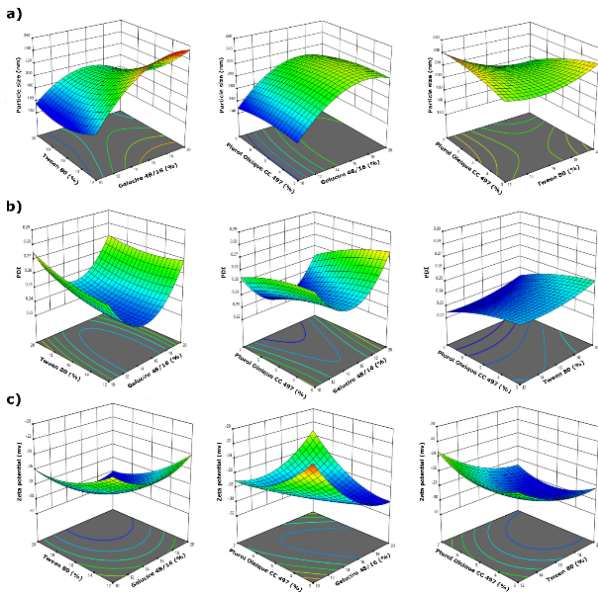


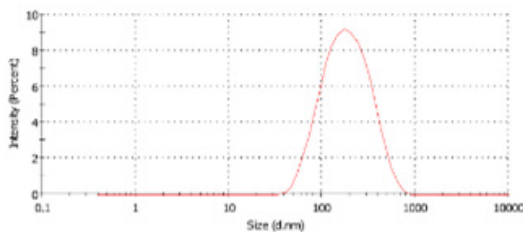
Figure 1. Box-Behnken design (BBD) 3D-graphs showing the effects of independent factor ratios on a) particle size, b) polydispersity index (PDI), and c) zeta potential
 After conducting the BBD experiments, the desirability point was determined. Based on this, the PDI, zeta potential, and particle size of formulations containing Gelucire 48/16 (15%), Tween 80 (16%), and Pluronic Oleique CC 497 (5%) were predicted as 0.237, -29.2 mV, and 214.38 nm, respectively

0.282±0.03, and -24±3.53 mV respectively (Figure 2), (n=3±SD). It was determined that the fabricated GP-SLN formulation was compatible with the desirability point obtained by the BBD. The entrapment efficiency was found to be 82.57±4.02% (n=3±SD).

Results

Z-Average (d.nm): 185,3	Peak 1: 221,8	95,8	45,6
Pdi: 0,282	Peak 2: 95,68	4,2	4,462
Intercept: 0,498	Peak 3: 0,000	0,0	0,000
Result quality Good			

Size Distribution by Intensity



Results

Zeta Potential (mV): -24,0	Mean (mV)	Area (%)	St Dev (mV)
Zeta Deviation (mV): 3,53	Peak 1: -24,0	100,0	3,53
Conductivity (mS/cm): 0,0273	Peak 2: 0,00	0,0	0,00
Result quality Good	Peak 3: 0,00	0,0	0,00

Zeta Potential Distribution

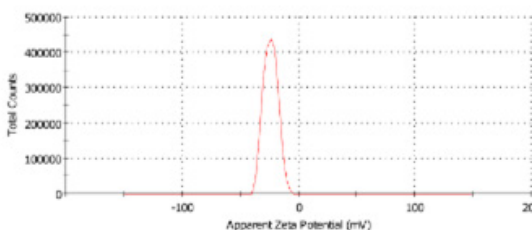


Figure 2. Particle size, polydispersity index (PDI), and zeta potential of the GP-SLN formulation (n=3±SD)
 GP-SLN: Gabapentin loaded solid lipid nanoparticle formulation

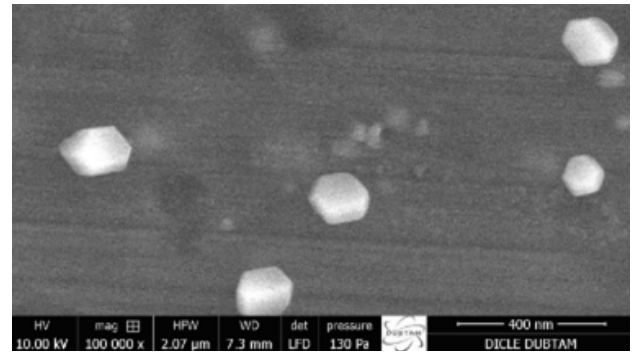


Figure 3. SEM images of the GP-SLN formulation showing cubical shaped nanoparticles
 SEM: Scanning electron microscopy; GP-SLN: Gabapentin loaded solid lipid nanoparticle formulation

Morphological studies

The SEM images in Figure 3 revealed that the lipid nanoparticles in the GP-SLN formulation had a cubical shape and uniform size distribution. The Zetasizer confirmed the absence of aggregation with a PDI value below 0.3.

Solid state characterization studies

Figure 4 shows the DSC thermograms of the gabapentin, Gelucire 48/16, and their mixture. The thermogram reveals that gabapentin had an endothermic peak at 166 °C, while Gelucire 48/16 reached an endothermic peak at 50 °C. The individual and mixed peaks suggest that there is no interaction between gabapentin and Gelucire 48/16.

Figure 5 shows the 400 to 4000 cm⁻¹ IR range Fourier transform of gabapentin and Gelucire 48/16. Gabapentin's unique peaks, including the two peaks at 2922 cm⁻¹ and 2958 cm⁻¹ were stretching vibrations of NH₃⁺. Peaks at 1539 cm⁻¹ were the vibration of NH₃⁺ deformation and the ionized asymmetric carboxylate group (39). The C=O band at 1810 cm⁻¹, the NH₂ band at 2605 cm⁻¹, and the C-N band at 1297 cm⁻¹ were revealed (40). Additionally, Gelucire 48/16's -OH band at 2885 cm⁻¹ and the C=O band at 1736 cm⁻¹ were also found (41).

After conducting the FTIR experiments on a mixture of gabapentin and Gelucire 48/16, it was found that all major gabapentin-related peaks were present, indicating no interactions between the two compounds.

In vitro release and release kinetics studies

In Figure 6, the release of gabapentin from different

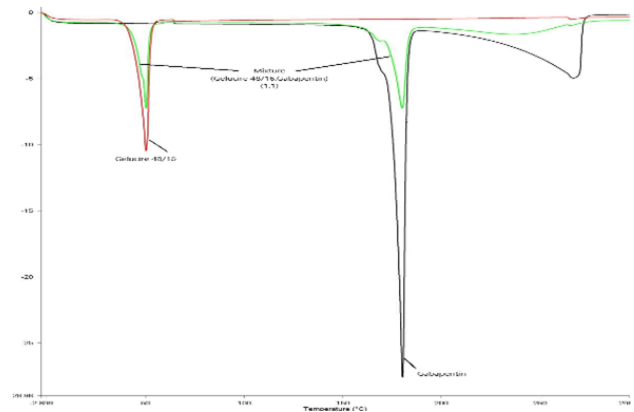


Figure 4. Differential scanning calorimetry (DSC) thermograms of gabapentin, Gelucire 48/16, and physical mixture (1:1)

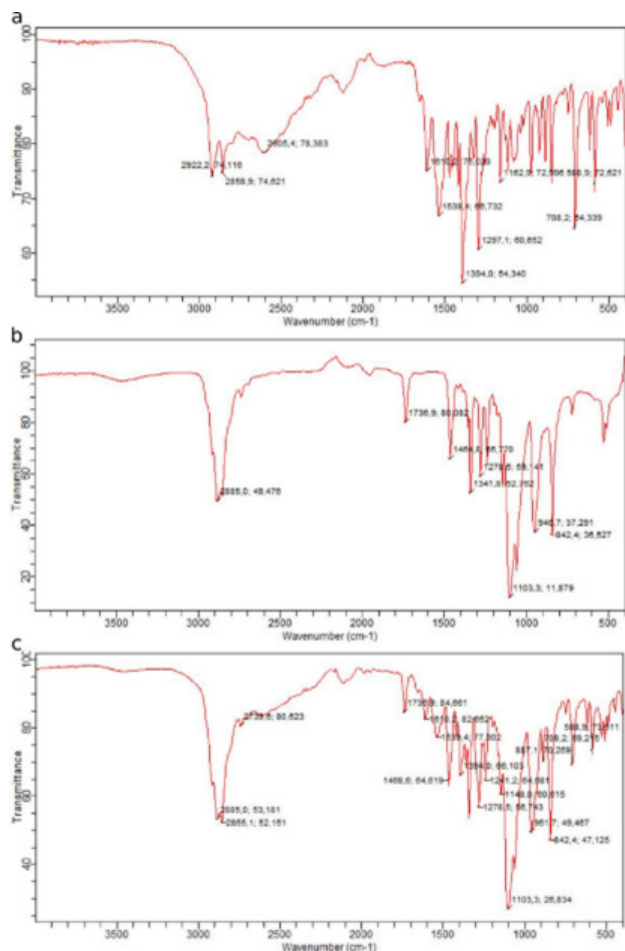


Figure 5. Fourier transform infrared spectroscopy (FTIR) spectra of a) gabapentin, b) Gelucire 48/16, and c) physical mixture

formulations is presented. The first noticeable effect was a burst release in the GP-SLN formulation, which amounted to $23.164 \pm 2.76\%$ after 1 hr. This was followed by a controlled release, with $55.02 \pm 5.64\%$ after 8 hr. The release kinetics and models were investigated further, and the results are shown in Figure 7 and Table 4.

Table 4. Release kinetics modeling and results of the GP-SOL and GP-SLN formulation

Models and equations	Formulation	Evaluation criteria				
		Parameter	r ²	r ² adjusted	MSC	AIC
Zero-order $F = k_0 * t$	GP-SOL	$k_0 = 16.547$	0.186	0.186	-0.445	91.418
	GP-SLNs	$k_0 = 8.663$	0.713	0.713	0.796	70.625
First-order $F = 100 * [1 - \exp(-k_1 * t)]$	GP-SOL	$k_1 = 0.684$	0.961	0.961	2.589	61.078
	GP-SLNs	$k_1 = 0.119$	0.862	0.862	1.543	63.336
Higuchi $F = k_H * t^{0.5}$	GP-SOL	$k_H = 40.804$	0.891	0.891	1.561	71.362
	GP-SLNs	$k_H = 20.485$	0.977	0.977	3.322	45.370
Korsmeyer-Peppas $F = k_{KP} * t^n$	GP-SOL	$k_{KP} = 47.66$	0.953	0.948	2.215	64.822
	GP-SLNs	$k_{KP} = 17.51$	0.938	0.930	2.130	57.287
Peppas-Sahlin $F = k_1 * t^m + k_2 * t^{2+m}$	GP-SOL	$k_1 = 60.584$	0.986	0.982	3.242	54.553
	GP-SLNs	$k_1 = 19.315$	0.974	0.966	2.793	50.66
Weibull $F = 100 * [1 - \exp(-((t - Ti)^\beta)/\alpha)]$	GP-SOL	$\beta = 0.651$	0.997	0.996	4.605	40.917
	GP-SLNs	$\beta = 0.666$	0.985	0.981	3.341	45.170
Hopfenberg $F = 100 * [1 - (k_{HB} * t)^n]$	GP-SOL	$k_{HB} = 0.101$	0.889	0.876	1.351	73.457
	GP-SLNs	$k_{HB} = 0.035$	0.822	0.8	1.075	67.838
Baker-Lonsdale $\frac{3}{2} * [1 - (1 - F/100)^{2/3}] - \frac{F}{100} = k_{BL} * t$	GP-SOL	$k_{BL} = 0.061$	0.99	0.99	3.941	47.555
	GP-SLNs	$k_{BL} = 0.009$	0.974	0.974	3.182	46.766

GP-SOL: Gabapentin solution; GP-SLN: Gabapentin loaded solid lipid nanoparticle formulation)

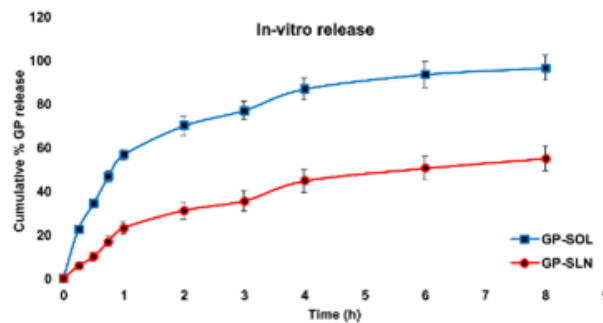


Figure 6. Release profiles of the GP-SOL and GP-SLN formulation (n=3±SD)
GP-SOL: Gabapentin solution; GP-SLN: Gabapentin loaded solid lipid nanoparticle formulation)

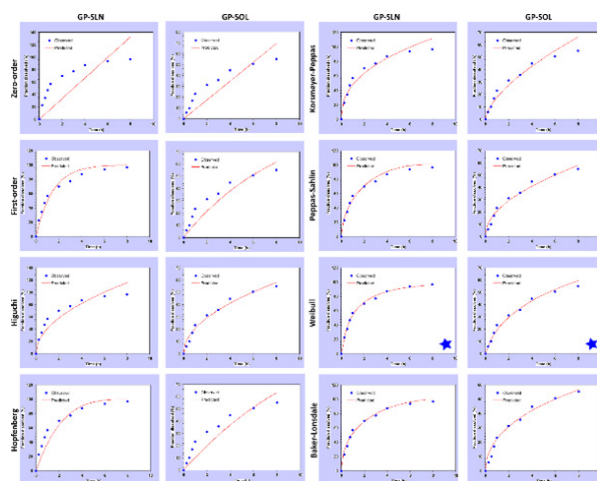


Figure 7. Release kinetics curves obtained with the DDSolver software for the GP-SOL and GP-SLN formulation
GP-SOL: Gabapentin solution; GP-SLN: Gabapentin loaded solid lipid nanoparticle formulation)

Ex vivo permeation studies

The study was conducted on sheep nasal mucosa to investigate the effectiveness of the GP-SLN formulation. The total amount of gabapentin permeated over time was measured and the results showed that the GP-SLN formulation had a higher permeability compared to the GP-SOL. Specifically, 44.45 ± 3.45 mg/cm² of gabapentin

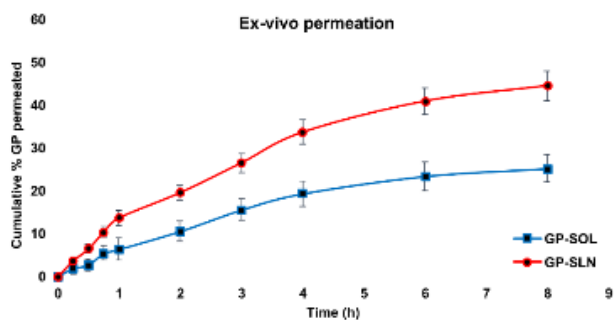


Figure 8. Ex vivo permeation of GP from the GP-SOL and GP-SLN formulations ($n=3\pm SD$)
GP: Gabapentin; GP-SOL: Gabapentin solution; GP-SLN: Gabapentin loaded solid lipid nanoparticle formulation

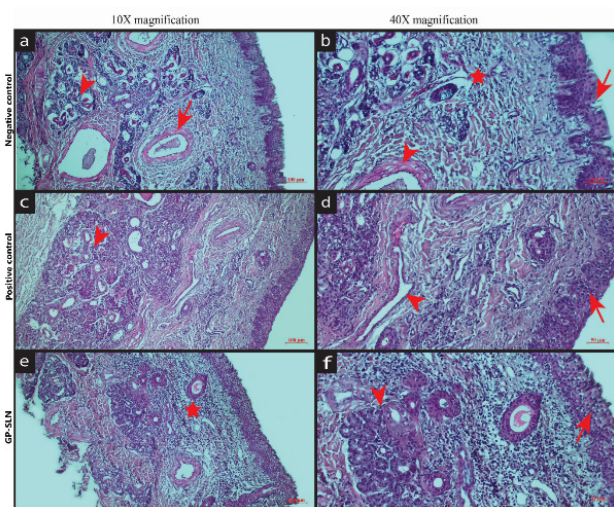


Figure 9. a) Degenerated bowman glands (arrowhead) and internal tissue damage (arrow); b) Degenerated respiratory epithelial cell (arrow), vascular wall (arrowhead), leukocyte infiltration (star); c) Regular glands and ducts (arrowhead); d) Regular lining epithelium of respiratory epithelial cell (arrow), normal vessels (arrowhead); e) Leukocyte infiltration (star); f) Bowman glands (arrowhead), connective tissue and lining epithelium (arrow)

was permeated from the GP-SLN formulation, while only 25.178 ± 3.25 mg/cm² was permeated from the GP-SOL. The permeability of the GP-SLN formulation was 1.7 times greater than that of the GP-SOL (Figure 8 and Table 5).

Histopathological studies

A histopathology study was performed to determine the harmful effects of the excipients utilized in the SLN formulation. Figure 9 shows the histopathological pictures of sheep nasal mucosa. The mucosa treated with isopropyl alcohol (positive control) displayed degenerated bowman glands with a loss of epithelial cells and internal tissue injury (Figures 9a and 9b). When PBS (negative control, Figures 9c and 9d) and the GP-SLN formulation (Figures 9e and 9f) were applied to the nasal mucosa, neither nasociliary

Table 5. Permeability and flux values of the GP-SOL and GP-SLN formulations ($n=3\pm SD$)

	GP-SOL	GP-SLN
Permeability (P , cm/h)	0.324 ± 0.035	0.56 ± 0.026
Flux (J , mg/cm ² /hr)	1.622 ± 0.173	2.801 ± 0.128

GP-SOL: Gabapentin solution; GP-SLN: Gabapentin loaded solid lipid nanoparticle formulation

damage nor cell necrosis was seen, and the epithelial layer remained intact. The pH value of 6.04 ± 0.45 ($n=3\pm SD$) for the GP-SLN formulation was found to be well within the range of human nasal pH (5.5-6.5). These findings suggest that the nasal mucosa was not harmed by the excipients used in the GP-SLN formulation.

Stability

During the stability study of the GP-SLN formulation, no significant changes in the particle size, PDI, and zeta potential were observed. The formulation retained its physical appearance and the particle size distribution remained narrow ($PDI < 0.5$), indicating that uniform distribution was maintained.

Discussion

Recent advancements in nanotechnology have made significant progress in developing sustained-release drugs. The main purpose of the treatment is to target drugs effectively on the tissue, which leads to a decrease in adverse effects and an increase in efficacy. Especially in central nervous system disorders, passing the blood-brain barrier is crucial. As a result, various dosage forms and application techniques are being researched, and nasal delivery of drug molecules is one of the non-invasive techniques under investigation (42, 43).

Quality issues in pharmaceutical products can often be traced back to the design stage. No matter how much testing is done, a poorly designed product will still be unsafe and/or ineffective. Therefore, it is important to incorporate quality into the product design process itself, rather than relying solely on analysis and testing (44). Traditionally, pharmaceutical products are developed and optimized by analyzing one factor at a time. This involves varying one factor while keeping all others constant. However, this method is time-consuming and does not allow for the evaluation of possible interactions between factors. This can lead to inadequate execution of formulation development and optimization. To overcome these limitations, the design of experiments (DoE) approach can provide better results with a smaller number of experiments. By evaluating multiple factors simultaneously, DoE can help to identify interactions and optimize the formulation development process (45).

In this study, the effects of independent variables on a GP-SLN formulation were analyzed using 3D surface-response graphs, as shown in Figure 1 and Table 3. The particle size of the nanoparticles in the fabricated GP-SLN formulation was in the range of 154.8–256.0 nm. The model was found to be significant, with an f -value of 4.65 and a P -value of less than 0.05. According to Equation 4, an increase in the amount of Gelucire 48/16 (X_1) increased particle size, while an increase in the amount of Tween 80 (X_2) led to a decrease in particle size as expected. However, excessive use of Tween 80 (X_2^2) caused an increase in particle size, which could result in the formation of undesirable structures such as gel or micelle. Similar findings were also observed in different studies (45–49).

PDI was in the range of 0.232 to 0.286. The f -value of the model was 4.31, and the P -value was less than 0.05, indicating the significance of the model. The positive sign of X_1 in Equation 5 suggests that an increase in Gelucire 48/16 leads to an increase in PDI. On the other hand, the negative

sign of X_2X_3 shows that the amounts of Tween 80 and Plurol Oleique CC 497 lead to a decrease in PDI as expected. In addition, the negative coefficients of X_1X_2 and X_1X_3 indicate that the use of Gelucire 48/16 with Tween 80 and Plurol Oleique CC 497 leads to a reduction in PDI (45-49).

The zeta potential was in the range of -20.8 to -29.9 mV. The statistical analysis showed that the model was significant with a high *f*-value of 12.88 and a *P*-value less than 0.05. Equation 6 revealed that the zeta potential decreased negatively with an increase in the Tween 80 amount. On the other hand, the zeta potential increased due to the positive effect of Plurol Oleique CC 497. The simultaneous use of surfactant and cosurfactants in SLN formulations is crucial as it provides a better steric barrier, which is important for the stability of GP-SLNs (45-49).

It is essential to ensure high entrapment efficiency of drug delivery systems, which can be challenging when loading a hydrophilic drug into a lipophilic system. However, SLNs have the potential to entrap both hydrophilic and lipophilic drugs (50). This study demonstrated that gabapentin, a hydrophilic drug, was successfully loaded into SLNs at a rate of $82.57 \pm 4.02\%$.

The therapeutic effects of SLNs depend on the release of drug molecules. However, sometimes the drug molecules stick to the surface of the SLNs and are quickly released into the surrounding medium, which is known as a burst release, which is important for drug delivery systems to maintain a therapeutic concentration for effective treatment (51). In our study, gabapentin was rapidly released in the first hour (23.164%), followed by sustained release (55.02% after 8 hr), which is an example of a burst release (Figure 6). The release of gabapentin from the lipid core took longer than GP-SOL. The structure of the lipid matrix and the concentration of surfactants used can affect the release of gabapentin from SLNs (26).

Based on the release kinetics parameters displayed in Figure 7, it was concluded that the Weibull model is the most effective for the GP-SLN formulation. This model had the highest values of r^2 , r^2 adjusted, and MSC, and the lowest AIC values. The " β " parameter in the Weibull model explains the release from the lipid matrix. A " β value" of ≤ 0.75 indicates Fickian diffusion. For the GP-SLN formulation, the β value was found to be 0.666. Mathematical modeling has confirmed that gabapentin released from SLNs is based on Fickian diffusion. Therefore, the GP-SLN formulation can be considered a sustained-release carrier (52).

According to Table 5, the GP-SLN formulation demonstrated higher flux and permeability compared to the GP-SOL. This suggests that due to their lipophilic structure, the GP-SLN formulation can easily penetrate nasal tissue. Surfactants are also known to improve permeability (26, 42). Gabapentin has a hydrophilic nature and is not able to spread effectively across the nasal membrane. However, when lipophilicity increases, drug delivery systems and drug molecules become more compatible with the nasal membranes. The higher permeability and flux of the GP-SLN formulation can be attributed to its lipophilic nature and nano-sized particles (53).

Conclusion

The Quality by Design (QbD) approach is commonly used to fully comprehend the product and manufacturing process. It can also be used to screen and optimize

pharmaceutical products and production processes by examining how independent variables affect formulations. By using this, the quality of pharmaceutical products can be improved. In this study, the QbD approach was used as a new concept for fabricating a hydrophilic drug, a gabapentin-loaded SLN formulation. The GP-SLN formulation was created using a modified microemulsion method. The individual effects of CPPs on CQAs were evaluated using the Box-Behnken design to achieve the desired product quality. The optimized GP-SLN formulation was obtained from the overlay plot then it was successfully created with a small particle size (185.3 ± 45.6 nm) and high entrapment efficiency ($82.57 \pm 4.02\%$.) The *in vitro* release of the GP-SLN formulation was examined, and it was found that it followed the Weibull kinetic model, with gabapentin release due to Fickian diffusion. It was also shown that SLNs displayed a sustained release. The GP-SLN formulation showed higher drug diffusion (1.7 fold) compared to GP-SOL. The GP-SLN formulation also did not cause any nasociliary damage and/or cell necrosis, indicating that it is safe for nasal administration. From the findings above, it can be concluded that QbD can be successfully applied for the development of an SLN-based colloidal carrier system with fewer trials and higher quality characteristics.

Acknowledgment

This study was supported by "Dicle University Scientific Research Projects Coordinatorship" (DUBAP, Project code: ECZACILIK.22.005). The graphical abstract was created using BioRender.

Authors' Contributions

MO T and F A designed the experiments; MO T, FA, and MC G performed experiments and collected data; MOT, F A, and MC G discussed the results and strategy; MO T supervised, directed, and managed the study; MO T, F A, and MC G approved the final version to be published.

Conflicts of Interest

The authors declare no potential conflicts of interest.

References

1. Thurman DJ, Beghi E, Begley CE, Berg AT, Buchhalter JR, Ding D, *et al.* Standards for epidemiologic studies and surveillance of epilepsy. *Epilepsia* 2011; 52:2-26.
2. Cameron A, Bansal A, Dua T, Hill SR, Moshe SL, Mantel-Teeuwisse AK, *et al.* Mapping the availability, price, and affordability of antiepileptic drugs in 46 countries. *Epilepsia* 2012; 53:962-969.
3. Duncan JS, Sander JW, Sisodiya SM, Walker MC. Adult epilepsy. *Lancet* 2006; 367:1087-1100.
4. Fisher RS, van Emde Boas W, Blume W, Elger C, Genton P, Lee P, *et al.* Epileptic seizures and epilepsy: Definitions proposed by the International League Against Epilepsy (ILAE) and the International Bureau for Epilepsy (IBE). *Epilepsia* 2005; 46:470-472.
5. Meyer AC, Dua T, Ma J, Saxena S, Birbeck G. Global disparities in the epilepsy treatment gap: A systematic review. *Bull World Health Organ* 2010; 88:260-266.
6. Gidal BE, DeCerce J, Bockbrader HN, Gonzalez J, Kruger S, Pitterle ME, *et al.* Gabapentin bioavailability: Effect of dose and frequency of administration in adult patients with epilepsy. *Epilepsia Res* 1998; 31:91-99.
7. Goa KL, Sorkin EM. Gabapentin. A review of its pharmacological properties and clinical potential in epilepsy. *Drugs* 1993; 46:409-427.

8. Dhuria SV, Hanson LR, Frey WH, 2nd. Intranasal delivery to the central nervous system: Mechanisms and experimental considerations. *J Pharm Sci* 2010; 99:1654-1673.
9. Gangurde PK, Ajitkumar BN, Kumar L. Lamotrigine Lipid Nanoparticles for Effective Treatment of Epilepsy: A Focus on Brain Targeting via Nasal Route. *J Pharm Innov* 2019; 14:91-111.
10. Crowe TP, Greenlee MHW, Kanthasamy AG, Hsu WH. Mechanism of intranasal drug delivery directly to the brain. *Life Sci* 2018; 195:44-52.
11. de Mendoza AE-H, Pr at V, Mollinedo F, Blanco-Prieto MJ. *In vitro* and *in vivo* efficacy of edelfosine-loaded lipid nanoparticles against glioma. *J Control Release* 2011; 156:421-426.
12. Teaima MH, El-Nadi MT, Hamed RR, El-Nabarawi MA, Abdelmonem R. Lyophilized nasal inserts of atomoxetine HCl solid lipid nanoparticles for brain targeting as a treatment of attention-deficit/hyperactivity disorder (ADHD): A pharmacokinetics study on rats. *Pharmaceuticals (Basel)* 2023; 16:326-354.
13. Khan A, Imam SS, Aqil M, Ahad A, Sultana Y, Ali A, et al. Brain targeting of temozolomide via the intranasal route using lipid-based nanoparticles: Brain pharmacokinetic and scintigraphic analyses. *Mol Pharm* 2016; 13:3773-3782.
14. Patel S, Chavhan S, Soni H, Babbar AK, Mathur R, Mishra AK, et al. Brain targeting of risperidone-loaded solid lipid nanoparticles by intranasal route. *J Drug Target* 2011; 19:468-474.
15. Battaglia L, Panciani PP, Muntoni E, Capucchio MT, Biasibetti E, De Bonis P, et al. Lipid nanoparticles for intranasal administration: Application to nose-to-brain delivery. *Expert Opin Drug Deliv* 2018; 15:369-378.
16. Correia AC, Moreira JN, Sousa Lobo JM, Silva AC. Design of experiment (DoE) as a quality by design (QbD) tool to optimise formulations of lipid nanoparticles for nose-to-brain drug delivery. *Expert Opin Drug Deliv* 2023;20:1731-1748.
17. Tapeinos C, Battaglini M, Ciofani G. Advances in the design of solid lipid nanoparticles and nanostructured lipid carriers for targeting brain diseases. *J Control Release* 2017; 264:306-332.
18. Cunha S, Costa CP, Moreira JN, Sousa Lobo JM, Silva AC. Using the quality by design (QbD) approach to optimize formulations of lipid nanoparticles and nanoemulsions: A review. *Nanomedicine* 2020; 28:102206.
19. Bastogne T. Quality-by-design of nanopharmaceuticals - a state of the art. *Nanomedicine* 2017; 13:2151-2157.
20. Yasir M, Chauhan I, Zafar A, Verma M, Noorulla KM, Tura AJ, et al. Buspirone loaded solid lipid nanoparticles for amplification of nose to brain efficacy: Formulation development, optimization by Box-Behnken design, characterization and biological evaluation. *J Drug Deliv Sci Technol* 2021; 61:102164.
21. Kamathe S, Patil P, Muchandi C. Solid lipid nanoparticles of gabapentin for partial seizures. *Indian Drugs* 2023; 60:42.
22. Kumar S, Xu X, Gokhale R, Burgess DJ. Formulation parameters of crystalline nanosuspensions on spray drying processing: A DoE approach. *Int J Pharm* 2014; 464:34-45.
23. Panigrahi KC, Patra CN, Jena GK, Ghose D, Jena J, Panda SK, et al. Gelucire: A versatile polymer for modified release drug delivery system. *Future J Pharm Sci* 2018; 4:102-108.
24. Sistla R, Shastri N. Modulating drug release profiles by lipid semi solid matrix formulations for BCS class II drug--an *in vitro* and an *in vivo* study. *Drug Deliv* 2014; 22:418-426.
25. Russo S, Torrisi C, Cardullo N, Muccilli V, La Mantia A, Castelli F, et al. Ethyl protocatechuate encapsulation in solid lipid nanoparticles: Assessment of pharmacotechnical parameters and preliminary *in vitro* evaluation for colorectal cancer treatment. *Pharmaceutics* 2023; 15:394-406.
26. Shah B, Khunt D, Bhatt H, Misra M, Padh H. Application of quality by design approach for intranasal delivery of rivastigmine loaded solid lipid nanoparticles: Effect on formulation and characterization parameters. *Eur J Pharm Sci* 2015; 78:54-66.
27. Abdulaal WH, Hosny KM, Alhakamy NA, Bakhaidar RB, Almuhanna Y, Sabei FY, et al. Fabrication, assessment, and optimization of alendronate sodium nanoemulsion-based injectable in-situ gel formulation for management of osteoporosis. *Drug Deliv* 2023; 30:2164094-2164102.
28. Piao HM, Balakrishnan P, Cho HJ, Kim H, Kim YS, Chung SJ, et al. Preparation and evaluation of fexofenadine microemulsions for intranasal delivery. *Int J Pharm* 2010; 395:309-316.
29. Gupta A, Ciavarella AB, Sayeed VA, Khan MA, Faustino PJ. Development and application of a validated HPLC method for the analysis of dissolution samples of gabapentin drug products. *J Pharm Biomed Anal* 2008; 46:181-186.
30. Salama AH, Salama AAA, Elhabak M. Single step nanospray drying preparation technique of gabapentin-loaded nanoparticles-mediated brain delivery for effective treatment of PTZ-induced seizures. *Int J Pharm* 2021; 602:120604.
31. Castile J, Cheng YH, Simmons B, Perelman M, Smith A, Watts P. Development of *in vitro* models to demonstrate the ability of PecSys(R), an *in situ* nasal gelling technology, to reduce nasal run-off and drip. *Drug Dev Ind Pharm* 2013; 39:816-824.
32. Li X, Du L, Chen X, Ge P, Wang Y, Fu Y, et al. Nasal delivery of analgesic ketorolac tromethamine thermo- and ion-sensitive *in situ* hydrogels. *Int J Pharm* 2015; 489:252-260.
33. Morel S, Ugazio E, Cavalli R, Gasco MR. Thymopentin in solid lipid nanoparticles. *Int J Pharm* 1996; 132:259-261.
34. Gasco MR. Method for producing solid lipid microspheres having a narrow size distribution. Google Patents; 1993.
35. Hsu CH, Lin SY. Rapid examination of the kinetic process of intramolecular lactamization of gabapentin using DSC-FTIR. *Thermochimica Acta* 2009; 486:5-10.
36. Gamal A, Saeed H, El-Ela FIA, Salem HF. Improving the antitumor activity and bioavailability of sonidegib for the treatment of skin cancer. *Pharmaceutics* 2021; 13:1560-1575.
37. Rana SS, Bhatt S, Kumar M, Malik A, Sharma JB, Arora D, et al. Design and optimization of itraconazole loaded SLN for intranasal administration using central composite design. *Nanosci Nanotechnol Asia* 2020; 10:884-891.
38. Mallick A, Gupta A, Hussain A, Aparajay P, Singh S, Singh SK, et al. Intranasal delivery of gabapentin loaded optimized nanoemulsion for augmented permeation. *J Drug Deliv Sci Technol* 2020; 56:101606.
39. Rimawi IB, Muqedi RH, Kanaze FI. Development of gabapentin expandable gastroretentive controlled drug delivery system. *Sci Rep* 2019; 9:11675-11686.
40. Swetha GA, Sachin HP, Choudhuri JR. Performance of an anticonvulsant drug, expired gabapentin, on zinc corrosion in an acidic environment. *Emergent Mater* 2023;6:721-740.
41. Alshawwa SZ, El-Masry TA, Elekhrawy E, Alotaibi HF, Sallam AS, Abdelkader DH. Fabrication of celecoxib PVP microparticles stabilized by gelucire 48/16 via electrospraying for enhanced anti-inflammatory action. *Pharmaceuticals (Basel)* 2023; 16:258-275.
42. Agrawal M, Saraf S, Saraf S, Dubey SK, Puri A, Patel RJ, et al. Recent strategies and advances in the fabrication of nano lipid carriers and their application towards brain targeting. *J Control Release* 2020; 321:372-415.
43. Khan AR, Yang X, Fu M, Zhai G. Recent progress of drug nanoformulations targeting to brain. *J Control Release* 2018; 291:37-64.
44. Fukuda IM, Pinto CFF, Moreira CD, Saviano AM, Louren o FR. Design of experiments (DoE) applied to pharmaceutical and analytical quality by design (QbD). *Braz J Pharm Sci* 2018; 54:1-15.
45. Rosa A, Nieddu M, Pitzanti G, Pireddu R, Lai F, Cardia MC. Impact of solid lipid nanoparticles on 3T3 fibroblasts viability and lipid profile: The effect of curcumin and resveratrol loading. *J Appl Toxicol* 2023; 43:272-286.
46. Bunjes H, Koch MH, Westesen K. Influence of emulsifiers on the crystallization of solid lipid nanoparticles. *J Pharm Sci* 2003; 92:1509-1520.
47. Duan Y, Dhar A, Patel C, Khimani M, Neogi S, Sharma P, et al. A brief review on solid lipid nanoparticles: part and parcel of contemporary drug delivery systems. *RSC Adv* 2020; 10:26777-26791.
48. Lai SK, Wang YY, Hanes J. Mucus-penetrating nanoparticles for drug and gene delivery to mucosal tissues. *Adv Drug Deliv Rev*

2009; 61:158-171.

49. Wang Q, Gong T, Sun X, Zhang Z. Structural characterization of novel phospholipid lipid nanoparticles for controlled drug delivery. *Colloids Surf B Biointerfaces* 2011; 84:406-412.

50. Mirchandani Y, Patravale VB, S B. Solid lipid nanoparticles for hydrophilic drugs. *J Control Release* 2021; 335:457-464.

51. Öztürk AA, Aygül A, Şenel B. Influence of glyceryl behenate, tripalmitin and stearic acid on the properties of clarithromycin incorporated solid lipid nanoparticles (SLNs): Formulation,

characterization, antibacterial activity and cytotoxicity. *J Drug Deliv Sci Technol* 2019; 54:101240.

52. Chen DB, Yang TZ, Lu WL, Zhang Q. *In vitro* and *in vivo* study of two types of long-circulating solid lipid nanoparticles containing paclitaxel. *Chem Pharm Bull (Tokyo)* 2001; 49:1444-1447.

53. Pardeshi CV, Belgamwar VS. Direct nose to brain drug delivery via integrated nerve pathways bypassing the blood-brain barrier: An excellent platform for brain targeting. *Expert Opin Drug Deliv* 2013; 10:957-972.